

April 14 - May 2

BELONG. BELIEVE. BECOME.

BE A DRAGON.

Belong

PEOPLE WILL FORGET WHAT WE SAID, PEOPLE WILL FORGET WHAT WE DID, BUT PEOPLE WILL NEVER FORGET HOW WE MADE THEM FEEL.

WE ARE CURIOUS, NOT JUDGMENTAL.

Believe

WE ARE BRAVER THAN WE BELIEVE, STRONGER THAN WE SEEM, AND SMARTER THAN WE THINK.

NOT ALL THOSE WHO WANDER ARE LOST.

Become

THE ONLY PERSON WE ARE DESTINED TO BECOME IS THE PERSON WE DECIDE TO BE.

- Information to order Hot lunch for the next couple of months is on slide #3!
- April 12: REACH Club in Provincials!
- April 14 - April 17: Quebec Trip
- April 15 and April 16: *Most* Parent Teacher Interviews are one these dates. Please use this link: [Red Deer Lake Parent Teacher Interview](#), select the teacher you'd like to see, then the date, and select a time. Please email the school if you have questions!
- School Council is organizing a potluck to support our amazing teachers during Parent-Teacher Interviews on **Tuesday, April 15**, and we'd love your help! If you're able to contribute, please sign up using the link below. It's a great way to show our appreciation and help keep everyone fueled throughout the evening - thank you in advance for your support: [Link to sign up](#).
- See this link to learn about Red Deer Lake's Before and After School program for September 2025:
- Thursday, April 17: Last day before Spring Break and full school PJ Day!
- April 18 - April 27: Spring Break!

Monday April 14	Tuesday, April 15	Wednesday, April 16	Thursday, April 17	Friday, April 18
Hot Lunch: Opa	Hot Lunch: Little Caesars	Hot Lunch: Holy Grill	Hot Lunch: Hot Dogs	
<div>Day #5</div> <div>Quebec Trip</div> <ul style="list-style-type: none">Grade 8 Badminton - after school.	<div>Day #6</div> <div>Quebec Trip</div> <div>Parent Teacher Interviews</div> <ul style="list-style-type: none">Grade 9 Badminton - before schoolGrade 3 Reader’s Theatre Club from 11:40 - 12:10PALS - recess helpers - from 11:40 - 12:10Grade 7 Badminton - after school	<div>Day #1</div> <div>Quebec Trip</div> <div>Parent Teacher Interviews</div> <ul style="list-style-type: none">Grade 8 Badminton - before schoolPALS - recess helpers - from 11:40 - 12:10Recycling Club!Grade 7 Badminton - after school	<div>Day #2</div> <div>Quebec Trip</div> <div>PJ Day at the School</div> <ul style="list-style-type: none">PALS - recess helpers - from 11:40 - 12:10Elementary ChoirDungeons and Dragons Club - after school	<div>First Day of Spring Break</div> <div>No School for Students</div>
April 21 - April 25: Spring Break: No School for Students				
Monday April 28	Tuesday, April 29	Wednesday, April 30	Thursday, May 1	Friday, May 2
Hot Lunch: Bar Burrito	Hot Lunch: Edo	Hot Lunch: Booster Juice		Hot Lunch: Hot Dogs
<div>Day #3</div> <ul style="list-style-type: none">Grade 8 Badminton - after school.	<div>Day #4</div> <div>Parent Teacher Interviews for 3T and 4L</div> <ul style="list-style-type: none">Grade 3 Reader’s Theatre Club from 11:40 - 12:10Chess ClubPEE: BroomballPALS - recess helpers - from 11:40 - 12:10Grade 7/8/9 Badminton - after school	<div>Day #5</div> <div>Parent Teacher Interviews for 3T and 4L</div> <ul style="list-style-type: none">Comic ClubPALS - recess helpers - from 11:40 - 12:10PEE: BroomballRecycling Club!Grade 7/8/9 Badminton - after school	<div>Day #6</div> <ul style="list-style-type: none">PALS - recess helpers - from 11:40 - 12:10Chess ClubDungeons and Dragons Club - after schoolGrade 7/8/9 Badminton - after school	<div>Day #1</div> <div>Wear your Dragon SWAG</div>

ORDERING FOR THE YEAR END 2025 HOT LUNCH WILL OPEN FRIDAY APRIL 11TH, 2025 and will close MONDAY APRIL 21ST, 2025. THE LUNCHES FOR THIS SESSION WILL BEGIN MONDAY MAY 5TH, 2025.

Hot Lunch Information

As you are ordering please note:

- As always with the first login of the year you will need to select your child's correct grade and teacher.
- We will not be offering cash or cheque refunds. If the program has to be cancelled, you can choose to donate your funds to the School Council or take a credit for future orders.
- If your child is absent from school on the day of a hot lunch, his or her lunch can either be picked up between 12:15 and 12:30 pm or it will be donated to another child in the class.

Payments

CASH or CHEQUE payments may be made UNTIL APRIL 21ST, 2025 / E-transfers will be available for payment UNTIL APRIL 21ST, 2025.

PLEASE SEND TRANSFER TO rdlcounciltreasurer@gmail.com (no password necessary), **but in the notes section of the transfer please list the family name.**

Please note that we unfortunately cannot process late payments. Orders not paid for on or before APRIL 21ST, 2025 will be cancelled, because this is our last session for the year **ORDERS NOT PAID WILL BE CANCELLED.**

ACCESS CODE IS RDLYEAREND2025HL



FIRST RESPONDER PROGRAM

July 2 - 29, 2025

EARN CREDITS AND START LEARNING
FOR YOUR CAREER

- First Responder: EMS, Fire, Police
- Occupational Therapy
- Physiotherapy
- Medicine
- Nursing & more!

GET CERTIFIED

- Standard First Aid – Level C with CPR & AED
- Airway Management
- Oxygen Therapy
- BLS CPR

REGISTER NOW

Registration closes May 31



foothillsschooldivision.ca



CATCH UP KEEP UP GET AHEAD

foothillsschooldivision.ca



2025

REGISTRATION OPEN!

*join
us!*

RDL SOCCER

GRASSROOTS SPRING LEAGUE

REGISTER
NOW!

“We want to ignite a passion for soccer among children that continues into adulthood.”

Find us on Facebook, Instagram or at our website to register.



www.rdlisa.com



[@rdlsoccerassn](https://www.instagram.com/rdlsoccerassn)



www.facebook.com/reddeerlakesoccer



WHAT WE EXPECT FROM OUR PARTNERS IN EDUCATION



FOR OPINIONS, ASK FRIENDS, FAMILY, OR MAKE A RESPECTFUL POST ON SOCIAL MEDIA.

FOR FACTS AND RESOURCES TO ANSWER A QUESTION, GO TO THE SOURCE: DIVISION OR SCHOOL WEBSITES, SCHOOL PERSONNEL, OR DIVISION OFFICE.

Social media can be a wonderful communication tool, but it is not an effective way to get **factual answers** or **resolve concerns** about our students, staff members, or operations. Often, it can prolong the resolution process. When you have a question, concern, or feedback, please follow the steps within Administrative Procedure 151 - Parental/Guardian Complaints or Concerns and Dispute Resolution

LEARN MORE:

- **Administrative Procedure 151:** Parental/Guardian Complaints or Concerns and Dispute Resolution
- **Administrative Procedure 146:** Social Media Code of Conduct
- **Administrative Procedure: 170:** Bullying, Harassment, and Threatening Behaviour

HOW TO ADDRESS CONCERNS REGARDING A STUDENT OR LEARNING

Questions related to a Student:

- Achievement
- Behavioural/Social
- Environment
- Instructional

Class Environment

School Bus



Respectfully communicate with the Teacher

Respectfully communicate with the Bus Driver

If the concern is not resolved



Respectfully communicate with the Principal

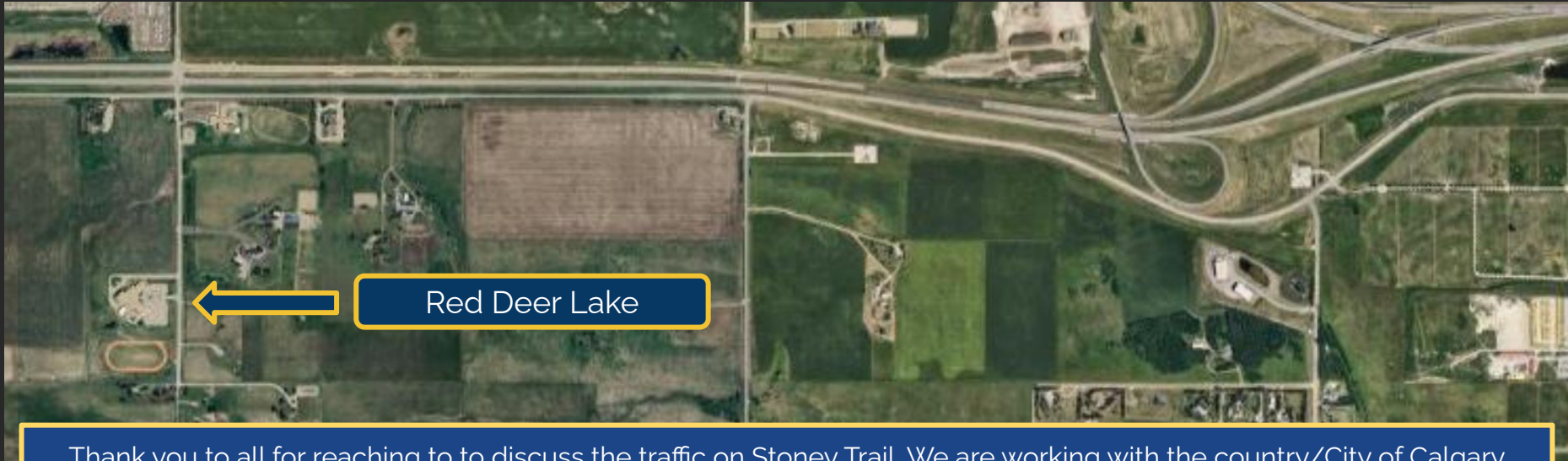
If the concern is not resolved



Contact Division Office
Director of Education Partner Relations

Information that our School Council asked us to share regarding what to do when you have questions!

Traffic @ Red Deer Lake



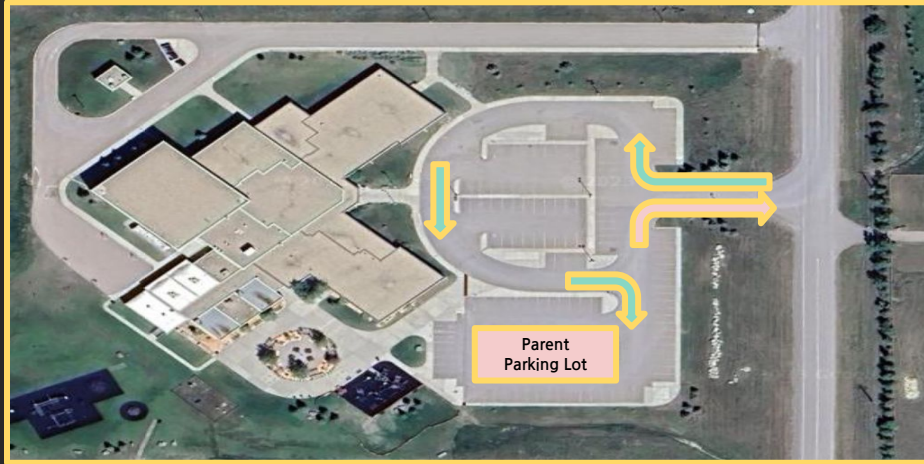
Thank you to all for reaching to to discuss the traffic on Stoney Trail. We are working with the country/City of Calgary regarding the lights as it appears that Tanbridge Academy's bell times have been changed to be closer to our arrival and dismissal bell, which has led to the increased congestion.

A few idea to alleviate this while we work through solutions.: You can always take 'Spruce Meadows Green' which is the road directly south of Stoney Trail / 22x which connects with James McKeivitt Way and Spruce Meadows Way.

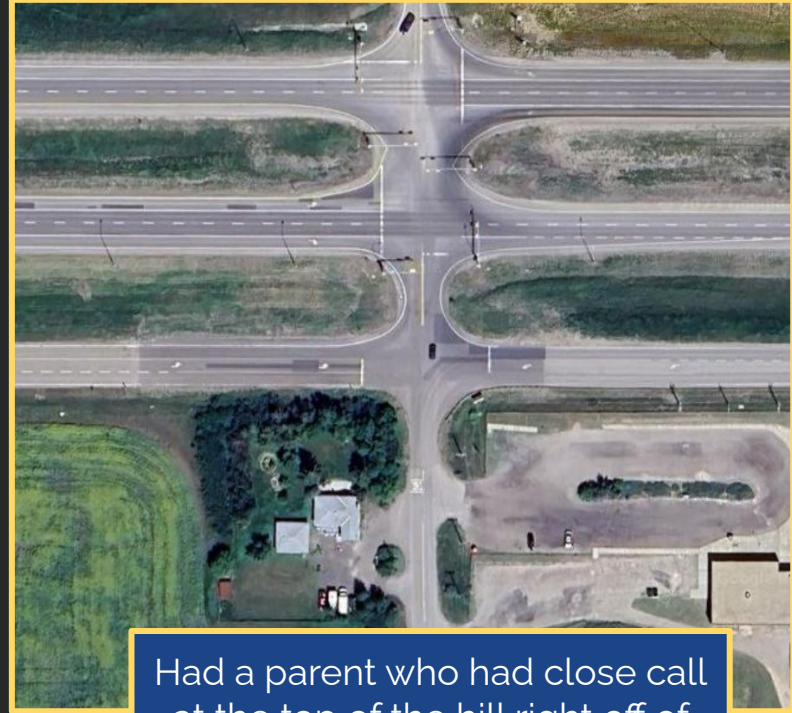
Carpooling is another option to consider to help with the traffic.

As always, here to support and help!

Traffic and Parking at Red Deer Lake



A reminder that there is a 'one way' to enter the parking lot.
The parent parking lot is on the south end!



Had a parent who had close call
at the top of the hill right off of
Highway 22x and Tanbridge
Academy. A friendly reminder
that it is a three way stop!

Bell Times

	End Time	Elementary	Junior High
8:25	8:35	Mindfulness / Homeroom	
8:35	9:20	Period 1	
9:20	10:05	Period 2	
10:05	10:10	Nutrition Break	
10:10	10:55	Period 3	
10:55	11:40	Period 4	
11:40	12:10	1st Recess	
12:10	12:40	Lunch	
12:40	1:25	Period 5	
1:25	1:55	2nd Recess	FLEX
1:55	2:40	Period 6	
2:40	3:25	Period 7	

USE OF MOBILE DEVICES IN SCHOOLS

EFFECTIVE SEPTEMBER 1, 2024

WHAT ARE MOBILE AND SMART DEVICES?

Personal mobile and smart devices can be used to communicate with or access the internet. This includes a cell phone, tablet, laptop, or smartwatch, as well as their accessories, such as earbuds.

Other communication and internet-capable devices apply.



INSTRUCTIONAL VS. NON-INSTRUCTIONAL TIME



Instructional Time is the time dedicated during the school day to teaching subject area and curricular content and that is supervised by a teacher or other member of the school staff team.

Non-Instructional Time is school designated time that includes the time before and after school, lunch, recess, or another school-designated break in instructional time.



EXPECTATIONS FOR STUDENT PERSONAL AND SMART DEVICES



Devices are powered off and stored out of view during instructional time*

Junior Kindergarten to Grade 12



Devices may be powered on and used during non-instructional time

Grade 7 - Grade 12



Devices are powered off and stored out of view during non-instructional time*

Junior Kindergarten to Grade 6



Social media sites are blocked on FSD Routers at all times

All school sites



Families may contact the School Office to relay urgent messages to a student. Students may utilize designated school phones to contact family members for urgent matters.

* Exemptions for personal mobile and smart device use for students with documented medical and/or assistive technology needs as outlined in AP 350. Families can work with school staff and administration to assure requisite exemptions are in place. Personal devices may be employed under direction of a teacher for academic use in grades 7 - 12.

For more information please see Administrative Procedure 350 - Respect for All
in accordance with Ministerial Order #014/2024

The new provincial mandate regarding mobile devices does not change much for what we have been doing at Red Deer Lake. However, a few pieces of information regarding our context:

- **All Mobile and Smart devices are powered off and out of view from 8:15 - 3:35 at Red Deer Lake from K-9.** We have received incredible feedback in previous years that this has been beneficial to our student population.
- If you have a get a hold of your child, please phone the office. We promise to get them so you can chat!

PARENT GUIDE TO ASSESSMENT & REPORTING

Multiple Modes of Assessment



- Quality assessment and evaluation are crucial for improving student learning.
- Ongoing research-based assessment and reporting can guide teachers in adjusting instruction, monitoring progress, providing effective feedback, and assessing student learning.
- Collaboration between parents, educators, and students is also important for student success.

3/7

GRADE LEVELS OF ACHIEVEMENT

Grades K - 8

Levels of Achievement are the scores teachers in kindergarten through to grade 8 use to indicate a student's level of performance, in relation to the grade level outcomes in the Alberta Curriculum. This is a 5-point system.

1

Student is not yet demonstrating knowledge and skills as outlined in the Alberta Curriculum.

2

Student is demonstrating partial knowledge and skills and is approaching an understanding of the concepts as outlined in the Alberta Curriculum.

3

Student is demonstrating satisfactory knowledge and skills and is developing an understanding with general application of the concepts as outlined in the Alberta Curriculum.

4

Student is demonstrating substantial knowledge and skills and shows comprehensive understanding with relevant application of the concepts as outlined in the Alberta Curriculum.

5

Student is demonstrating extensive knowledge and skills and shows a depth of understanding with thorough application of the concepts as outlined in the Alberta Curriculum.



Grades 9 - 12

Grade levels of achievement for students in grades 9 through 12 are percentage-based; however, teachers will communicate how these grades are determined for each class.

Foothills School Division Calendar: 2024/2025



2024-2025 INSTRUCTIONAL CALENDAR

Schools are closed on grey shaded days	AUGUST 2024	SEPTEMBER 2024	OCTOBER 2024
Public Board Meeting 1pm	Su Mo Tu We Th Fr Sa	Su Mo Tu We Th Fr Sa	Su Mo Tu We Th Fr Sa
Aug. 23 Schools open for registration	1 2 3	1 2 3 4 5 6 7	1 2 3 4 5
Aug. 26-29 Non-instructional Days	4 5 6 7 8 9 10	8 9 10 11 12 13 14	6 7 8 9 10 11 12
Aug. 30 Student Transition Day	11 12 13 14 15 16 17	15 16 17 18 19 20 21	13 14 15 16 17 18 19
Sept. 2 Labour Day	18 19 20 21 22 23 24	22 23 24 25 26 27 28	20 21 22 23 24 25 26
Sep. 3 Semester 1 Begins	25 26 27 28 29 30 31	29 30	27 28 29 30 31
Sep. 27 Non-instructional Day	NOVEMBER 2024	DECEMBER 2024	JANUARY 2025
Sep. 30 National Day for Truth & Reconciliation	Su Mo Tu We Th Fr Sa	Su Mo Tu We Th Fr Sa	Su Mo Tu We Th Fr Sa
Oct. 14 Thanksgiving	1 2	1 2 3 4 5 6 7	1 2 3 4
Nov. 1 Non-instructional Day	3 4 5 6 7 8 9	8 9 10 11 12 13 14	5 6 7 8 9 10 11
Nov. 11 Remembrance Day	10 11 12 13 14 15 16	15 16 17 18 19 20 21	12 13 14 15 16 17 18
Nov. 12-15 Fall Break	17 18 19 20 21 22 23	22 23 24 25 26 27 28	19 20 21 22 23 24 25
Nov. 18-19 Learner Conferences	24 25 26 27 28 29 30	29 30 31	26 27 28 29 30 31
Dec. 13 Non-instructional Day	FEBRUARY 2025	MARCH 2025	APRIL 2025
Dec. 23-Jan. 3 Winter Break	Su Mo Tu We Th Fr Sa	Su Mo Tu We Th Fr Sa	Su Mo Tu We Th Fr Sa
Jan. 29 Semester 2 Begins	1	1 2 3 4 5 6 7 8	1 2 3 4 5
Jan. 31 Non-instructional Day Elem. & Junior High	2 3 4 5 6 7 8	9 10 11 12 13 14 15	6 7 8 9 10 11 12
Feb. 3-14 Learner Profiles	9 10 11 12 13 14 15	16 17 18 19 20 21 22	13 14 15 16 17 18 19
Feb. 17 Family Day	16 17 18 19 20 21 22	23 24 25 26 27 28 29	20 21 22 23 24 25 26
Feb. 18 School Closed	23 24 25 26 27 28	30 31	27 28 29 30
Feb. 19 Non-instructional Day	MAY 2025	JUNE 2025	JULY 2025
Feb. 20-21 Teacher's Convention	Su Mo Tu We Th Fr Sa	Su Mo Tu We Th Fr Sa	Su Mo Tu We Th Fr Sa
Mar. 21 Non-instructional Day	1 2 3 4 5 6 7 8	1 2 3 4 5 6 7	1 2 3 4 5
Mar. 31 Non-instructional Day	9 10 11 12 13 14 15	8 9 10 11 12 13 14	6 7 8 9 10 11 12
Apr. 14-17 & 28-30 Learner Conferences	16 17 18 19 20 21 22	15 16 17 18 19 20 21	13 14 15 16 17 18 19
Apr. 18 Good Friday	23 24 25 26 27 28	22 23 24 25 26 27 28	20 21 22 23 24 25 26
Apr. 21 Easter Monday	26 27 28 29 30 31	29 30	27 28 29 30 31
Apr. 22-25 Spring Break	JUNE 2025	JULY 2025	
May 16 Non-instructional Day	Su Mo Tu We Th Fr Sa	Su Mo Tu We Th Fr Sa	
May 19 Victoria Day	1 2 3	1 2 3 4 5 6 7	1 2 3 4 5
Jun. 20 Non-instructional Day Elem. & Junior High	4 5 6 7 8 9 10	8 9 10 11 12 13 14	6 7 8 9 10 11 12
Jun. 26-27 Learner Profiles	11 12 13 14 15 16 17	15 16 17 18 19 20 21	13 14 15 16 17 18 19
Jun. 27 Final Day of Classes	18 19 20 21 22 23 24	22 23 24 25 26 27 28	20 21 22 23 24 25 26
Jun. 30 Non-instructional Day	25 26 27 28 29 30 31	29 30	27 28 29 30 31