

April 21 - May 9

BELONG. BELIEVE. BECOME.

BE A DRAGON.

Belong

PEOPLE WILL FORGET WHAT WE
SAID, PEOPLE WILL FORGET
WHAT WE DID, BUT PEOPLE WILL
NEVER FORGET HOW WE MADE
THEM FEEL.

WE ARE CURIOUS, NOT
JUDGMENTAL

Believe

WE ARE BRAVER THAN WE
BELIEVE, STRONGER THAN WE
SEEM, AND SMARTER THAN WE
THINK.

NOT ALL THOSE WHO WANDER
ARE LOST

Become

THE ONLY PERSON WE ARE
DESTINED TO BECOME IS THE
PERSON WE DECIDE TO BE.

- Thank you to our parents who volunteered and provided food for our potluck during parent teacher interviews this past week - so much appreciated! And thank you to our families who joined us!
- Heart to Heart Market is on May 1 from 2:30 - 3:15. Each class will be selling items to the school. ½ the proceeds will go to a school initiative decided by grade 6 school government and the other ½ to a school in Kenya that RDL has supported in the past!
- See this link to learn about Red Deer Lake's Before and After School program for September 2025:
- Thursday, April 17: Last day before Spring Break and full school PJ Day!
- April 18 - April 27: Spring Break!
- Grade 6-9 Dance on Thursday, May 15:
- Staff Appreciation Lunch on Friday, May 23: If you'd like to volunteer a dish, or time, please use this link: [Staff Appreciation Day Volunteer](#)
- Family Dance on Friday, May 30: If you'd like to volunteer chaperoning or to help with the concession, please use this link: [Family Dance: Volunteer](#)

April 21 - April 25: Spring Break: No School for Students

| Monday April 28 | Tuesday, April 29 | Wednesday, April 30 | Thursday, May 1 | Friday, May 2 |
|---|--|---|--|---|
| Hot Lunch: Bar Burrito | Hot Lunch: Edo | Hot Lunch: Booster Juice | | Hot Lunch: Hot Dogs |
| Day #3 <ul style="list-style-type: none"> Grade 8 Badminton - after school. | Day #4 Parent Teacher Interviews for 3T and 4L <ul style="list-style-type: none"> Grade 3 Reader's Theatre Club from 11:40 - 12:10 Chess Club PEE: Broomball PALS - recess helpers - from 11:40 - 12:10 Grade 7/8/9 Badminton - after school | Day #5 Parent Teacher Interviews for 3T and 4L <ul style="list-style-type: none"> Comic Club PALS - recess helpers - from 11:40 - 12:10 PEE: Broomball Recycling Club! Grade 7/8/9 Badminton - after school | Day #6 Heart to Heart Market <ul style="list-style-type: none"> PALS - recess helpers - from 11:40 - 12:10 Chess Club Dungeons and Dragons Club - after school Grade 7/8/9 Badminton - after school | Day #1 Wear your Dragon SWAG |
| Monday May 5 | Tuesday, May 6 | Wednesday, May 7 | Thursday, May 8 | Friday, May 9 |
| Hot Lunch: Bar Burrito | Hot Lunch: Edo | Hot Lunch: Booster Juice | | Hot Lunch: Hot Dogs |
| Day #2 Bus Driver Appreciation Day <ul style="list-style-type: none"> PEE: Kayaking | Day #3 <ul style="list-style-type: none"> PEE: Mini Golf Grade Six Vaccinations Grade 3 Reader's Theatre Club from 11:40 - 12:10 PALS - recess helpers - from 11:40 - 12:10 | Day #4 <ul style="list-style-type: none"> PEE: Kayaking Comic Club PALS - recess helpers - from 11:40 - 12:10 PEE: Broomball Recycling Club! | Day #5 <ul style="list-style-type: none"> PEE: Mini Golf PALS - recess helpers - from 11:40 - 12:10 Chess Club Dungeons and Dragons Club - after school | Day #6 Wear your Dragon SWAG |

Upcoming Events

Provincial Achievement Test Dates

Grade Six

- Wednesday: May 28: 9:00 - 11:00: English Language Arts: Part A
- Thursday: June 12: 9:00 - 10:00: English Language Arts: Part B
- Friday: June 13: 9:00 - 9:20: Mathematics: Part A
- Tuesday: June 17: 9:00 - 10:10: Mathematics: Part B
- Wednesday: June 18: 9:00 - 10:00: Social Studies

Grade Nine:

- Tuesday, May 27: 9:00 - 11:00: English Language Arts: Part A
- Thursday, June 12: 9:00 - 10:15: English Language Arts: Part B
- Friday: June 13: 9:00 - 9:30: Mathematics: Part A
- Tuesday: June 17: 9:00 - 10:20: Mathematics: Part B
- Wednesday: June 18: 9:00 - 10:20: Social Studies
- Thursday, June 19: 9:00 - 10:15: Science



FIRST RESPONDER PROGRAM

July 2 - 29, 2025

EARN CREDITS AND START LEARNING
FOR YOUR CAREER

- First Responder: EMS, Fire, Police
- Occupational Therapy
- Physiotherapy
- Medicine
- Nursing
& more!

GET CERTIFIED

- Standard First Aid –
Level C with CPR & AED
- Airway Management
- Oxygen Therapy
- BLS CPR

REGISTER NOW

Registration closes May 31



foothillsschooldivision.ca



CATCH UP KEEP UP GET AHEAD

foothillsschooldivision.ca



2025

REGISTRATION OPEN!

*join
us!*

RDL SOCCER

GRASSROOTS SPRING LEAGUE

REGISTER
NOW!

“We want to ignite a passion for soccer among children that continues into adulthood.”

Find us on Facebook, Instagram or at our website to register.



www.rdlisa.com



[@rdlsoccerassn](https://www.instagram.com/rdlsoccerassn)



www.facebook.com/reddeerlakesoccer



WHAT WE EXPECT FROM OUR PARTNERS IN EDUCATION



FOR OPINIONS, ASK FRIENDS, FAMILY, OR MAKE A RESPECTFUL POST ON SOCIAL MEDIA.

FOR FACTS AND RESOURCES TO ANSWER A QUESTION, GO TO THE SOURCE: DIVISION OR SCHOOL WEBSITES, SCHOOL PERSONNEL, OR DIVISION OFFICE.

Social media can be a wonderful communication tool, but it is not an effective way to get **factual answers** or **resolve concerns** about our students, staff members, or operations. Often, it can prolong the resolution process. When you have a question, concern, or feedback, please follow the steps within Administrative Procedure 151 - Parental/Guardian Complaints or Concerns and Dispute Resolution

LEARN MORE:

- **Administrative Procedure 151:** Parental/Guardian Complaints or Concerns and Dispute Resolution
- **Administrative Procedure 146:** Social Media Code of Conduct
- **Administrative Procedure: 170:** Bullying, Harassment, and Threatening Behaviour

HOW TO ADDRESS CONCERNS REGARDING A STUDENT OR LEARNING

Questions related to a Student:

- Achievement
- Behavioural/Social
- Environment
- Instructional

Class Environment

School Bus



Respectfully communicate with the Teacher

Respectfully communicate with the Bus Driver

If the concern is not resolved



Respectfully communicate with the Principal

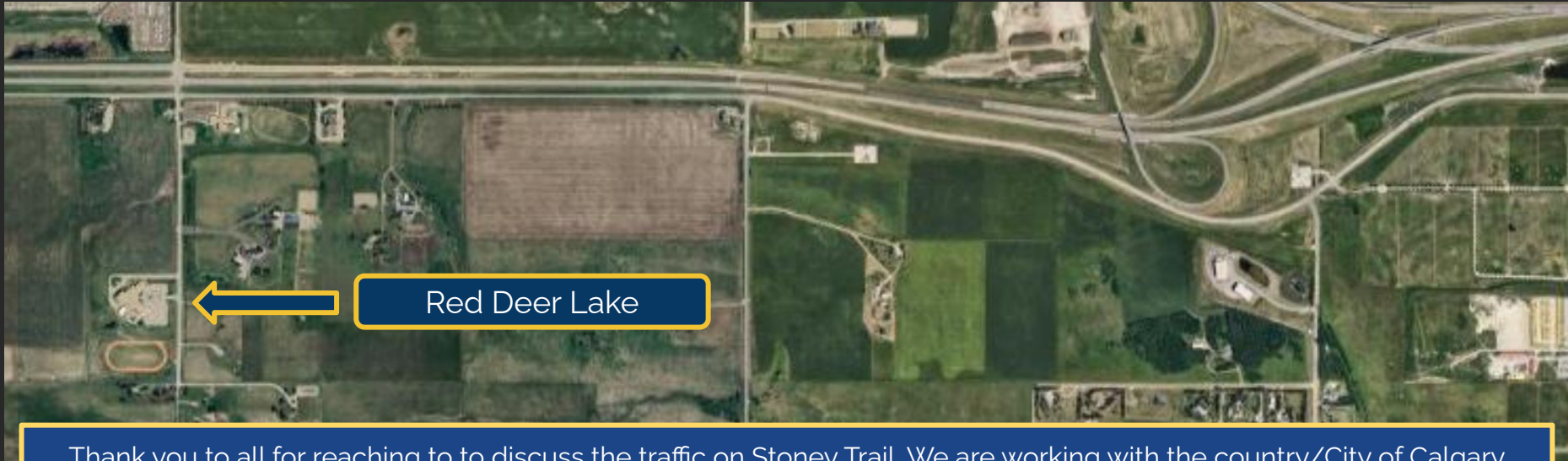
If the concern is not resolved



Contact Division Office
Director of Education Partner Relations

Information that our School Council asked us to share regarding what to do when you have questions!

Traffic @ Red Deer Lake



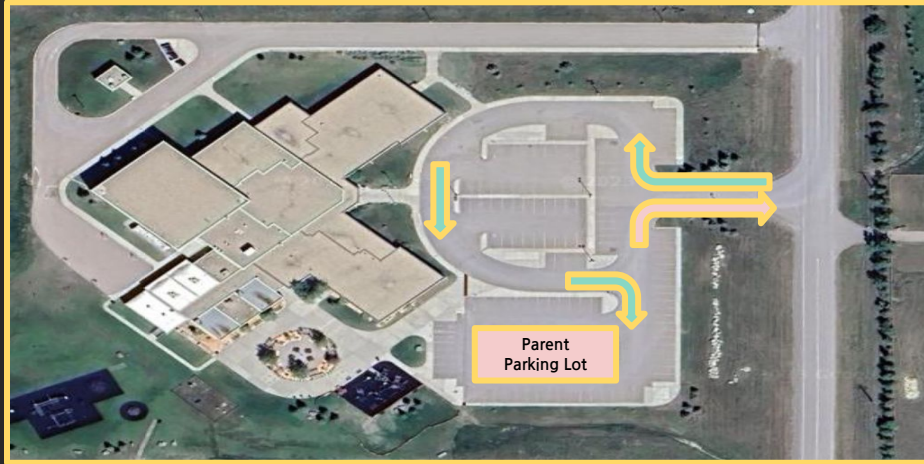
Thank you to all for reaching to to discuss the traffic on Stoney Trail. We are working with the country/City of Calgary regarding the lights as it appears that Tanbridge Academy's bell times have been changed to be closer to our arrival and dismissal bell, which has led to the increased congestion.

A few idea to alleviate this while we work through solutions.: You can always take 'Spruce Meadows Green' which is the road directly south of Stoney Trail / 22x which connects with James McKeivitt Way and Spruce Meadows Way.

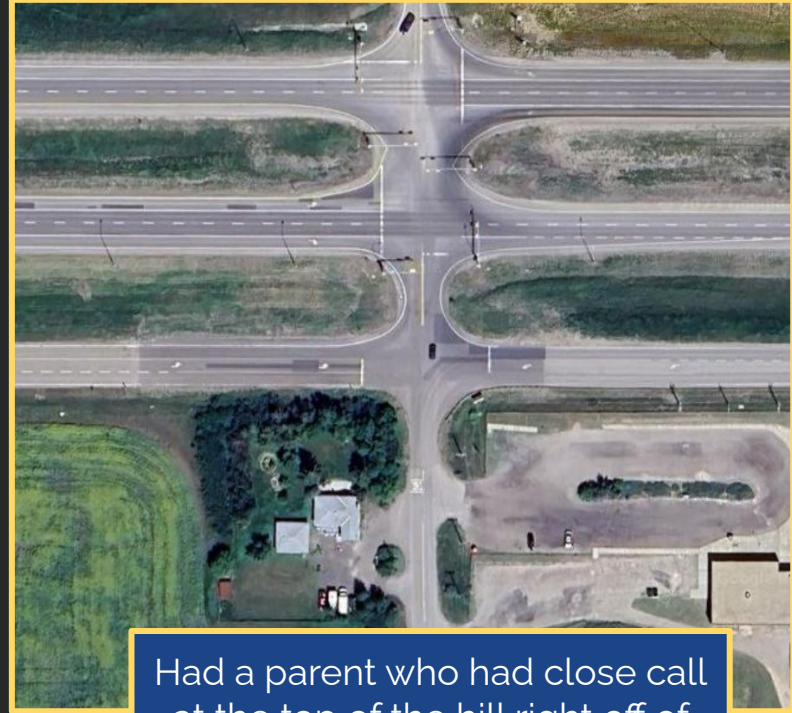
Carpooling is another option to consider to help with the traffic.

As always, here to support and help!

Traffic and Parking at Red Deer Lake



A reminder that there is a 'one way' to enter the parking lot.
The parent parking lot is on the south end!



Had a parent who had close call
at the top of the hill right off of
Highway 22x and Tanbridge
Academy. A friendly reminder
that it is a three way stop!

Bell Times

| | End Time | Elementary | Junior High |
|-------|----------|------------------------|-------------|
| 8:25 | 8:35 | Mindfulness / Homeroom | |
| 8:35 | 9:20 | Period 1 | |
| 9:20 | 10:05 | Period 2 | |
| 10:05 | 10:10 | Nutrition Break | |
| 10:10 | 10:55 | Period 3 | |
| 10:55 | 11:40 | Period 4 | |
| 11:40 | 12:10 | 1st Recess | |
| 12:10 | 12:40 | Lunch | |
| 12:40 | 1:25 | Period 5 | |
| 1:25 | 1:55 | 2nd Recess | FLEX |
| 1:55 | 2:40 | Period 6 | |
| 2:40 | 3:25 | Period 7 | |

USE OF MOBILE DEVICES IN SCHOOLS

EFFECTIVE SEPTEMBER 1, 2024

WHAT ARE MOBILE AND SMART DEVICES?

Personal mobile and smart devices can be used to communicate with or access the internet. This includes a cell phone, tablet, laptop, or smartwatch, as well as their accessories, such as earbuds.

Other communication and internet-capable devices apply.



INSTRUCTIONAL VS. NON-INSTRUCTIONAL TIME



Instructional Time is the time dedicated during the school day to teaching subject area and curricular content and that is supervised by a teacher or other member of the school staff team.

Non-Instructional Time is school designated time that includes the time before and after school, lunch, recess, or another school-designated break in instructional time.



EXPECTATIONS FOR STUDENT PERSONAL AND SMART DEVICES



Devices are powered off and stored out of view during instructional time*

Junior Kindergarten to Grade 12



Devices may be powered on and used during non-instructional time

Grade 7 - Grade 12



Devices are powered off and stored out of view during non-instructional time*

Junior Kindergarten to Grade 6



Social media sites are blocked on FSD Routers at all times

All school sites



Families may contact the School Office to relay urgent messages to a student. Students may utilize designated school phones to contact family members for urgent matters.

* Exemptions for personal mobile and smart device use for students with documented medical and/or assistive technology needs as outlined in AP 350. Families can work with school staff and administration to assure requisite exemptions are in place. Personal devices may be employed under direction of a teacher for academic use in grades 7 - 12.

For more information please see Administrative Procedure 350 - Respect for All
in accordance with Ministerial Order #014/2024

The new provincial mandate regarding mobile devices does not change much for what we have been doing at Red Deer Lake. However, a few pieces of information regarding our context:

- **All Mobile and Smart devices are powered off and out of view from 8:15 - 3:35 at Red Deer Lake from K-9.** We have received incredible feedback in previous years that this has been beneficial to our student population.
- If you have a get a hold of your child, please phone the office. We promise to get them so you can chat!

PARENT GUIDE TO ASSESSMENT & REPORTING

Multiple Modes of Assessment



- Quality assessment and evaluation are crucial for improving student learning.
- Ongoing research-based assessment and reporting can guide teachers in adjusting instruction, monitoring progress, providing effective feedback, and assessing student learning.
- Collaboration between parents, educators, and students is also important for student success.

3/7

GRADE LEVELS OF ACHIEVEMENT

Grades K - 8

Levels of Achievement are the scores teachers in kindergarten through to grade 8 use to indicate a student's level of performance, in relation to the grade level outcomes in the Alberta Curriculum. This is a 5-point system.

1

Student is not yet demonstrating knowledge and skills as outlined in the Alberta Curriculum.

2

Student is demonstrating partial knowledge and skills and is approaching an understanding of the concepts as outlined in the Alberta Curriculum.

3

Student is demonstrating satisfactory knowledge and skills and is developing an understanding with general application of the concepts as outlined in the Alberta Curriculum.

4

Student is demonstrating substantial knowledge and skills and shows comprehensive understanding with relevant application of the concepts as outlined in the Alberta Curriculum.

5

Student is demonstrating extensive knowledge and skills and shows a depth of understanding with thorough application of the concepts as outlined in the Alberta Curriculum.



Grades 9 - 12

Grade levels of achievement for students in grades 9 through 12 are percentage-based; however, teachers will communicate how these grades are determined for each class.

