

February 10 - February 28

BELONG. BELIEVE. BECOME.

BE A DRAGON.

Belong

PEOPLE WILL FORGET WHAT WE SAID, PEOPLE WILL FORGET WHAT WE DID, BUT PEOPLE WILL NEVER FORGET HOW WE MADE THEM FEEL.

WE ARE CURIOUS, NOT JUDGMENTAL

Believe

WE ARE BRAVER THAN WE BELIEVE, STRONGER THAN WE SEEM, AND SMARTER THAN WE THINK.

NOT ALL THOSE WHO WANDER ARE LOST

Become

THE ONLY PERSON WE ARE DESTINED TO BECOME IS THE PERSON WE DECIDE TO BE.

School Council has designed special **Pink Shirts for Pink Shirt Day**, and orders are now open!

- 👉 **Order by:** February 7
- 👉 **Pickup:** Sent home with students on February 25
- 👉 **Where to Order:** www.rdlschoolcouncil.ca/merchandise

- Grade 1 - 3 Skiing at Winsport on Tuesday, February 11th.
- Grade 4 - 6 Skiing at Winsport on Wednesday, February 12th.
- Quebec Valentine's Day Bake Sale on Thursday, February 13th.
- Grade Six basketball tournament on Thursday, February 13th.
- Learner Profiles will be available on Edsembli on Friday, February 14th.
- No School from February 15th - February 23rd.
- Pink Shirt Day! Friday, February 28. We will have a Buddy Activity and a movie in the gym starting around 1:30.
- Spring Photos on Friday, March 7
- Band Camp for Grade 8/9 Band Students on Monday, March 10 and Wednesday, March 12.
- Paul Davies - expert on internet safety - in to speak with students and parents on Tuesday, March 11.
- Carnival celebration and activity day for our K-6 students, French option class in junior high, and Quebec trippers on March 13.
- Family Dance on Friday, March 14
- No School on Monday, March 24 and Tuesday, March 25

Monday February 10	Tuesday, February 11	Wednesday, February 12	Thursday, February 13	Friday, February 14
Hot Lunch: Little Caesars	Hot Lunch: Subway			Hot Lunch: Hot Dogs
<p>Day #3</p> <ul style="list-style-type: none"> Junior Girls Basketball (Before School) Senior Girls and Boys Basketball (After School) 	<p>Day #4</p> <p>Grades 1 - 3 Ski/Snowboard Trip to Winsport!</p> <ul style="list-style-type: none"> Junior boys basketball - before School) Grade 3 Reader's Theatre Club from 11:40 - 12:10 PALS - recess helpers - from 11:40 - 12:10 Crochet Club! Senior basketball - after school 	<p>Day #5</p> <p>Grades 4 - 6 Ski/Snowboard Trip to Winsport</p> <ul style="list-style-type: none"> Senior boys basketball - before School) PALS - recess helpers - from 11:40 - 12:10 Cantina is open for junior high during lunch. REACH Club Recycling Club! Comic Club! Junior Basketball - after school 	<p>Day #6</p> <p>Bakesale for Quebec Fundraiser</p> <p>Grade 6 Basketball Tournament</p> <ul style="list-style-type: none"> Senior girls basketball - before School) PALS - recess helpers - from 11:40 - 12:10 Cantina is open for junior high during lunch. Chess Club! Junior basketball - after school Dungeons and Dragons Club (After School) 	<p>Day #1</p> <p>Learner Profiles available through Edsemlbi</p> <p>Last day before a week off! Full day!</p> <p>Wear your Dragon SWAG!</p>

February 15 - February 23: February Break

Monday February 24	Tuesday, February 25	Wednesday, February 26	Thursday, February 27	Friday, February 28
Hot Lunch: Little Caesars	Hot Lunch: Bar Burrito	Hot Lunch: Booster Juice		Hot Lunch: Hot Dogs
<p>Day #2</p> <ul style="list-style-type: none"> Junior Girls Basketball (Before School) Senior Girls and Boys Basketball (After School) 	<p>Day #3</p> <ul style="list-style-type: none"> Grade 3 Reader's Theatre Club from 11:40 - 12:10 PALS - recess helpers - from 11:40 - 12:10 Senior basketball - after school 	<p>Day #4</p> <ul style="list-style-type: none"> Senior boys basketball - before School) PALS - recess helpers - from 11:40 - 12:10 REACH Club! Recycling Club! Crochet Club! Junior Basketball - after school 	<p>Day #5</p> <ul style="list-style-type: none"> Senior girls basketball - before School) PALS - recess helpers - from 11:40 - 12:10 Cantina is open for junior high during lunch. Comic Club! Junior basketball - after school Dungeons and Dragons Club (After School) 	<p>Day #6</p> <p>Pink Shirt Day!</p> <p>Wear Pink and we will celebrate 'Belonging' in the gym starting at 1:30 with a buddy movie and popcorn!</p> <ul style="list-style-type: none"> Chess Club!

[Link](#) to information regarding negotiations with CUPE Union who represents our support staff.

Spring Hot Lunch Program Now Open!

Parents, if you're looking for convenient, delicious meals for your child, or students, if you're excited for tasty lunch options, now's your chance to order!

Don't miss out – place your orders now!

👉 [Order Here](#)

Order Deadline: FEB 14, 2025

Payment Options:

Cash, Cheque, or E-transfer (Due by FEB 21, 2025)

Please send e-transfers to:

rdlcounciltreasurer@gmail.com

No password needed

Include your family name in the transfer notes.

Please note: Late payments cannot be processed. Orders that are not paid by FEB 21, 2025 will be canceled.

Access Code: RDLSPRING2025HL

Hot Lunch Info!

Learner Profiles!

Learner Profiles (Report Cards) will be available for parents to view on Friday, February 14, 2025.

You will receive an email letting you know they are ready to view. Please ensure that you have logged into your child's Edsembli Account as you will need login information to be able to access these.

Families can also access their child's grades and updates at any time by logging in to view. These gradebooks are updated monthly by our teachers for core subjects. [Link for Edsembli Parent Portal is here.](#)

School fees for the 2024-2025 school year are now due. If you have paid your fees, thank you, and please disregard this note.

What is Due

All school fees and sports fees.

Option fees for Semester 2 are due February 15, 2025.

Field trips that have not happened yet, for example the ski trip for Gr.1-6, are not due until the day of the field trip. The exception to this is students in kindergarten.

To Pay

You can pay online through your edsembli account, or in the office with a cheque, cash, or debit/credit card. Our preferred method is through your edsembli account.

New Dragon Families

If this is your first year at Red Deer Lake, your accounts are all set up!

Please login through this link:

<https://sis.edsembli.com/WebAdmin/AB/FSD/UI/Account/SignIn>

School Fee Information

Your username is your email address.

To set up your password please click on “Forgot Password” after entering your email and clicking sign in.

Please be mindful that passwords are very sensitive. You only have one chance to enter the correct password. After that, your account will lock and you will receive a user not found error.

If you can't remember your password:

please click on “Forgot Password” after entering your email and clicking sign in.

If you are getting a “user not found” error message, please email me and let me know! I will need to unlock your account from my end.

I have attached information regarding edsembli account password changes, and information on how to navigate edsembli to find current marks, and fees.

If you have any questions regarding your account, fees, or your ability to pay them, please reach out to myself at 403-938-5984, or tuckerm@fsd38.ab.ca

FOOTNOTES

steps toward a flourishing community

December 2024 & January 2025

HOW FSD HAS, AND CONTINUES TO OFFER CHOICE IN EDUCATION

ABOUT FOOTNOTES

Welcome to the Footnotes, a monthly newsletter showcasing how Foothills School Division (FSD) is placing education at the centre of a flourishing community.

These highlights are assurance to our school community that the Board of Trustees is actioning the goals and priorities of FSD's annual Education Plan, making visible how the work of the Board is connected to schools and students in their classrooms.

OUR HISTORY OF YOUR CHOICE IN EDUCATION

Foothills School Division has a long-standing history of providing **choice in education**.

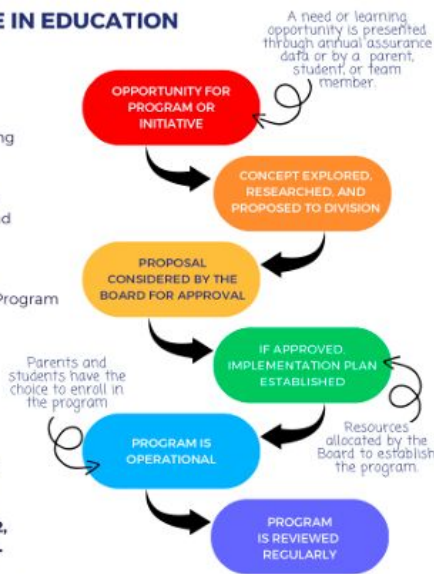
In **2001**, the Board of Trustees committed to offering French Immersion to students, providing the prospect of national and global careers.

FSD continues to offer innovative opportunities to respond to, and meet the diverse learning and career needs of our community.

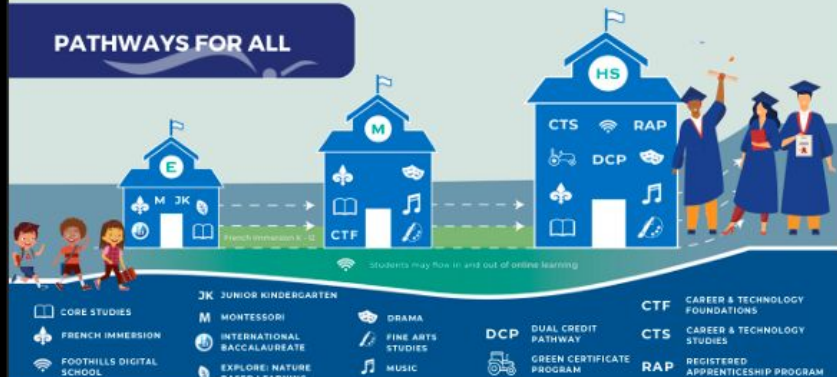
- Alberta High School of Fine Arts
- International Baccalaureate Primary Years Program
- Explore: Nature-Based Learning
- Montessori
- Vertical Farm Initiative
- Dual Credit Pathways
- First Responder Summer School Program

The Board of Trustees review and approve learning programs that the division provides to best meet the needs of the students, which in turn, achieve the strategic directions of the division. **From Junior Kindergarten to Grade 12, FSD offers choice for learning, for all learners.**

LEARN MORE: bit.ly/FSD_Learning



PATHWAYS FOR ALL

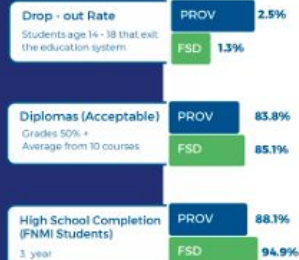


PATHWAYS FOR ALL IS A PLACE FOR ALL

Within the legislative frameworks, the FSD Board of Trustees build policies in which the school board operates, Policy 14-- *A Place for All*-- addresses the division priority of safe, welcoming, caring, and inclusive learning environments.

How do we know that FSD has opportunities for everyone? We look at the Annual Education Results Report for evidence.

- The strong results for literacy and numeracy assessments show students have solid foundational knowledge for learning.
- 85% of FSD students scored within the "acceptable" range on Diploma exams, which is above the provincial average. This indicates students are learning for transfer by applying knowledge across several subject areas.
- The drop-out rate is lower than the provincial average and other local systems, indicating that our students are engaged in what they are learning and are receiving an education that works best for their needs and goals.
- Students are agents in their own learning, designing projects that address local societal needs.



YOUR TRUSTEES

WARD 1 - Jack Molyneux
WARD 2 - John Evans
WARD 3 - Theresa Letendre, Chair
WARD 4 - Lisa Penzo, Vice Chair
WARD 4 - Sharon Nichols
WARD 5 - Phil Irwin

YOUR EXECUTIVE TEAM

Superintendent of Schools - Chris Fuzessy
Assistant Superintendent, Corporate Services - Drew Chipman
Assistant Superintendent, Learning Services - Caroline Roberts
Assistant Superintendent, Employee Services - Allen Davidson

WHAT WE EXPECT FROM OUR PARTNERS IN EDUCATION



Information that our School Council asked us to share regarding what to do when you have questions!

FOR OPINIONS, ASK FRIENDS, FAMILY, OR MAKE A RESPECTFUL POST ON SOCIAL MEDIA.

FOR FACTS AND RESOURCES TO ANSWER A QUESTION, GO TO THE SOURCE: DIVISION OR SCHOOL WEBSITES, SCHOOL PERSONNEL, OR DIVISION OFFICE.

Social media can be a wonderful communication tool, but it is not an effective way to get **factual answers** or **resolve concerns** about our students, staff members, or operations. Often, it can prolong the resolution process. When you have a question, concern, or feedback, please follow the steps within Administrative Procedure 151 - Parental/Guardian Complaints or Concerns and Dispute Resolution

LEARN MORE:

- **Administrative Procedure 151:** Parental/Guardian Complaints or Concerns and Dispute Resolution
- **Administrative Procedure 146:** Social Media Code of Conduct
- **Administrative Procedure: 170:** Bullying, Harassment, and Threatening Behaviour

HOW TO ADDRESS CONCERNS REGARDING A STUDENT OR LEARNING

Questions related to a Student:

- Achievement
- Behavioural/Social
- Environment
- Instructional

Class Environment

School Bus

Respectfully communicate with the Teacher

Respectfully communicate with the Bus Driver

If the concern is not resolved

Respectfully communicate with the Principal

If the concern is not resolved

Contact Division Office
Director of Education Partner Relations

Traffic @ Red Deer Lake



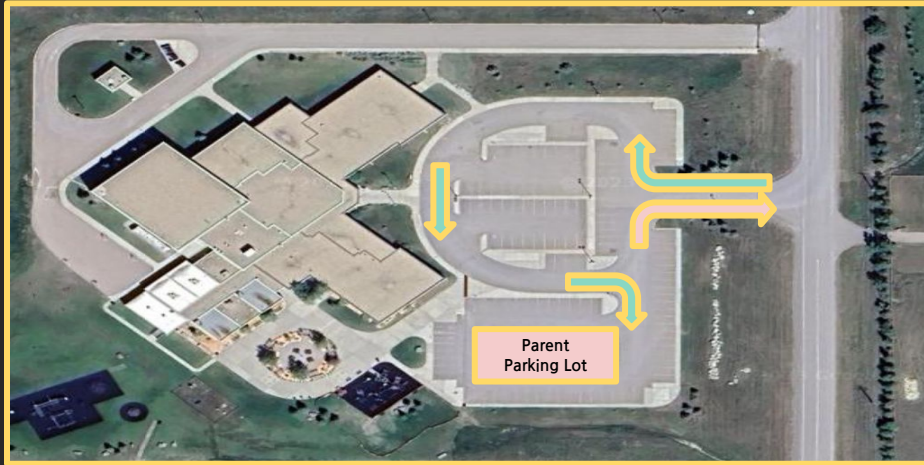
Thank you to all for reaching to to discuss the traffic on Stoney Trail. We are working with the country/City of Calgary regarding the lights as it appears that Tanbridge Academy's bell times have been changed to be closer to our arrival and dismissal bell, which has led to the increased congestion.

A few idea to alleviate this while we work through solutions.: You can always take 'Spruce Meadows Green' which is the road directly south of Stoney Trail / 22x which connects with James McKeivitt Way and Spruce Meadows Way.

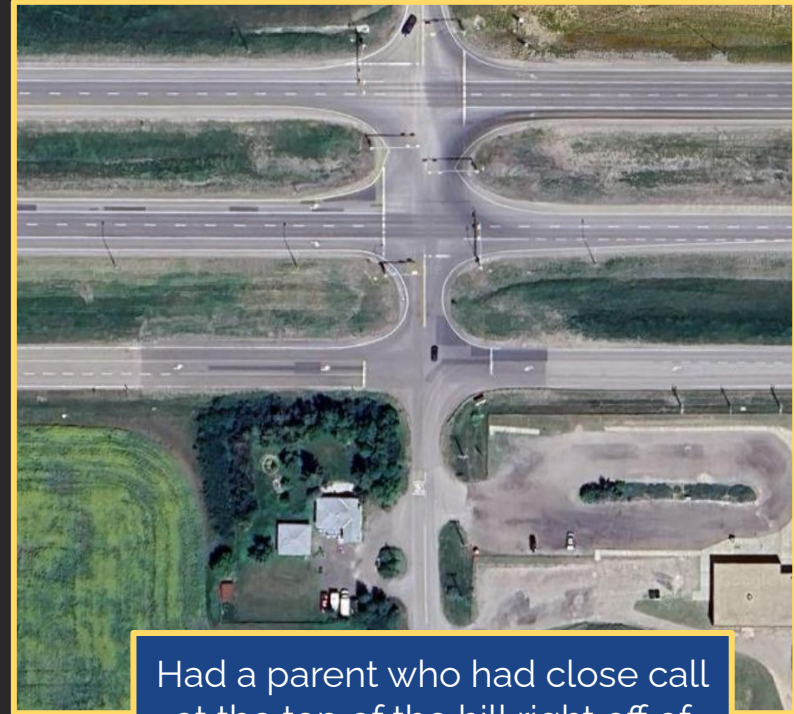
Carpooling is another option to consider to help with the traffic.

As always, here to support and help!

Traffic and Parking at Red Deer Lake



A reminder that there is a 'one way' to enter the parking lot.
The parent parking lot is on the south end!



Had a parent who had close call at the top of the hill right off of Highway 22x and Tanbridge Academy. A friendly reminder that it is a three way stop!

Bell Times

	End Time	Elementary	Junior High
8:25	8:35	Mindfulness / Homeroom	
8:35	9:20	Period 1	
9:20	10:05	Period 2	
10:05	10:10	Nutrition Break	
10:10	10:55	Period 3	
10:55	11:40	Period 4	
11:40	12:10	1st Recess	
12:10	12:40	Lunch	
12:40	1:25	Period 5	
1:25	1:55	2nd Recess	FLEX
1:55	2:40	Period 6	
2:40	3:25	Period 7	

USE OF MOBILE DEVICES IN SCHOOLS

EFFECTIVE SEPTEMBER 1, 2024

WHAT ARE MOBILE AND SMART DEVICES?

Personal mobile and smart devices can be used to communicate with or access the internet. This includes a cell phone, tablet, laptop, or smartwatch, as well as their accessories, such as earbuds.

Other communication and internet-capable devices apply.



INSTRUCTIONAL VS. NON-INSTRUCTIONAL TIME



Instructional Time is the time dedicated during the school day to teaching subject area and curricular content and that is supervised by a teacher or other member of the school staff team.

Non-Instructional Time is school designated time that includes the time before and after school, lunch, recess, or another school-designated break in instructional time.



EXPECTATIONS FOR STUDENT PERSONAL AND SMART DEVICES



Devices are powered off and stored out of view during instructional time*

Junior Kindergarten to Grade 12



Devices may be powered on and used during non-instructional time

Grade 7 - Grade 12



Devices are powered off and stored out of view during non-instructional time*

Junior Kindergarten to Grade 6



Social media sites are blocked on FSD Routers at all times

All school sites



Families may contact the School Office to relay urgent messages to a student. Students may utilize designated school phones to contact family members for urgent matters.

* Exemptions for personal mobile and smart device use for students with documented medical and/or assistive technology needs as outlined in AP 350. Families can work with school staff and administration to assure requisite exemptions are in place. Personal devices may be employed under direction of a teacher for academic use in grades 7 - 12.

For more information please see **Administrative Procedure 350 - Respect for All** in accordance with Ministerial Order #014/2024

The new provincial mandate regarding mobile devices does not change much for what we have been doing at Red Deer Lake. However, a few pieces of information regarding our context:

- **All Mobile and Smart devices are powered off and out of view from 8:15 - 3:35 at Red Deer Lake from K-9.** We have received incredible feedback in previous years that this has been beneficial to our student population.
- If you have a get a hold of your child, please phone the office. We promise to get them so you can chat!

PARENT GUIDE TO ASSESSMENT & REPORTING

Multiple Modes of Assessment



- Quality assessment and evaluation are crucial for improving student learning.
- Ongoing research-based assessment and reporting can guide teachers in adjusting instruction, monitoring progress, providing effective feedback, and assessing student learning.
- Collaboration between parents, educators, and students is also important for student success.

3/7

GRADE LEVELS OF ACHIEVEMENT

Grades K - 8

Levels of Achievement are the scores teachers in kindergarten through to grade 8 use to indicate a student's level of performance, in relation to the grade level outcomes in the Alberta Curriculum. This is a 5-point system.

1

Student is not yet demonstrating knowledge and skills as outlined in the Alberta Curriculum.

2

Student is demonstrating partial knowledge and skills and is approaching an understanding of the concepts as outlined in the Alberta Curriculum.

3

Student is demonstrating satisfactory knowledge and skills and is developing an understanding with general application of the concepts as outlined in the Alberta Curriculum.

4

Student is demonstrating substantial knowledge and skills and shows comprehensive understanding with relevant application of the concepts as outlined in the Alberta Curriculum.

5

Student is demonstrating extensive knowledge and skills and shows a depth of understanding with thorough application of the concepts as outlined in the Alberta Curriculum.



Grades 9 - 12

Grade levels of achievement for students in grades 9 through 12 are percentage-based; however, teachers will communicate how these grades are determined for each class.

Foothills School Division Calendar: 2024/2025

2024 - 2025 Calendar (Approved by the Board January 31, 2024)

		M	T	W	T	F	Student Contact Days	Staff Days			M	T	W	T	F	Student Contact Days	Staff Days					
August					1	2	0	5								15	18					
		5	6	7	8	9							3	4	5			6	7			
		12	13	14	15	16							10	11	12			13	14			
		19	20	21	22	23							17	18	19			20	21			
	26	27	28	29	30				24	25	26	27	28									
September		2	3	4	5	6	18	19								19	21					
		9	10	11	12	13							3	4	5			6	7			
		16	17	18	19	20							10	11	12			13	14			
		23	24	25	26	27							17	18	19			20	21			
	30								24	25	26	27	28									
									31													
October				1	2	3	22	22								16	16					
		7	8	9	10	11								1	2			3	4			
		14	15	16	17	18							7	8	9			10	11			
		21	22	23	24	25							14	15	16			17	18			
	28	29	30	31					21	22	23	24	25									
									28	29	30											
November						1	15	16								20	21					
		4	5	6	7	8								5	6			7	8	9		
		11	12	13	14	15							12	13	14			15	16			
		18	19	20	21	22							19	20	21			22	23			
	25	26	27	28	29				26	27	28	29	30									
December						6	14	15								19/20	21					
		2	3	4	5	6								2	3			4	5	6		
		9	10	11	12	13							9	10	11			12	13			
		16	17	18	19	20							16	17	18			19	20			
	23	24	25	26	27				23	24	25	26	27									
	30	31							30	31												
January				1	2	3	19/20	20								88/89	97					
		6	7	8	9	10								6	7			8	9	10		
		13	14	15	16	17							13	14	15			16	17			
		20	21	22	23	24							20	21	22			23	24			
	27	28	29	30	31				27	28	29	30	31									
Semester 2																89/90	97					
TOTAL																177/179	194					

Student Transition Day – Aug 30
 First Day of School for All Students – Sept 3
 1st Day of 2nd Semester – Jan 29
 Last Day of School – June 27

- Statutory Day
- Fall/Winter/Spring Break
- Local Professional Learning Day
- Operations Day
- Divisional Learning Day

Local Professional Learning Day including Support Staff

- Schools Closed
- Elem./Jr. School PD
- Teachers' Convention