

June 16 - June 30

BELONG. BELIEVE. BECOME.

BE A DRAGON.

Belong

PEOPLE WILL FORGET WHAT WE  
SAID, PEOPLE WILL FORGET  
WHAT WE DID, BUT PEOPLE WILL  
NEVER FORGET HOW WE MADE  
THEM FEEL.

WE ARE CURIOUS, NOT  
JUDGMENTAL

Believe

WE ARE BRAVER THAN WE  
BELIEVE, STRONGER THAN WE  
SEEM, AND SMARTER THAN WE  
THINK.

NOT ALL THOSE WHO WANDER  
ARE LOST

Become

THE ONLY PERSON WE ARE  
DESTINED TO BECOME IS THE  
PERSON WE DECIDE TO BE.

For our current grade 6, 7, and 8 students,

**Please complete the Complementary Course Selection Form by Monday, June 23 - this is the link [Google Form: RDL - Complementary Courses](#).** Please note that course availability is subject to student enrollment. Additional sections or courses may be added based on student interest and scheduling feasibility. More information below:

At Red Deer Lake School, we are committed to providing rich, meaningful learning opportunities that spark student interest, develop real-world skills, and foster personal growth. One key way we do this in Grades 7–9 is through Career and Technology Foundations (CTF)—options or complementary courses - a dynamic Alberta Education program that allows students to explore interests and career pathways through hands-on learning.

We are excited to align our complementary course offerings with the Alberta CTF Program of Studies, which encourages students to:

- Explore personal interests and passions while making connections to potential careers.
- Plan, create, and communicate in response to challenges.
- Collaborate effectively and responsibly with others using technology and community resources

To ensure we are able to offer the most relevant and engaging experiences possible, **we ask all families to please complete the Complementary Course Selection Form by Monday, June 23** - please complete this [Google Form: RDL - Complementary Courses](#)

June 16 - June 30

BELONG. BELIEVE. BECOME.

BE A DRAGON.

Belong

PEOPLE WILL FORGET WHAT WE  
SAID, PEOPLE WILL FORGET  
WHAT WE DID, BUT PEOPLE WILL  
NEVER FORGET HOW WE MADE  
THEM FEEL.

WE ARE CURIOUS, NOT  
JUDGMENTAL

Believe

WE ARE BRAVER THAN WE  
BELIEVE, STRONGER THAN WE  
SEEM, AND SMARTER THAN WE  
THINK.

NOT ALL THOSE WHO WANDER  
ARE LOST

Become

THE ONLY PERSON WE ARE  
DESTINED TO BECOME IS THE  
PERSON WE DECIDE TO BE.

- A reminder to please access your child's Edsembli account to pay for field trips that are coming up! Please and thanks!
- School Supply lists will be shared with families next week. \*\*\*Updated\*\*\*
- Volunteer Ice Cream Social on June 23 @ 2:45 - 3:25 in the Learning Commons - invitations will come via email. \*\*\*New Start Time\*\*\*
- Elementary Sports Day: June 24th from 9:30 - 11:40
- Junior High Awards in the gymnasium: June 24th @ 1:45
- Talent Show in the gymnasium: June 25th @ 12:45 \*\*\*New Start Time\*\*\*
- <https://bit.ly/rdlyearbook25> - please navigate to this link to purchase a yearbook!
- Are you leaving Red Deer Lake next year? Please let us know in this form: [Red Deer Lake - 2025](#)

#### Friday, August 15

- Class lists shared on Edsembli.

#### Friday, August 29 - OPTIONAL

- Open House from 2:00 - 3:30. Come see the school and your classrooms!

#### Tuesday, September 2

- First day for all 1-9 students!
- Staggered start for Kindergarten

#### Thursday, September 4

- Welcome Back BBQ for all Red Deer Lake families!

2025/2026: Dates

Monday, June 16	Tuesday, June 17	Wednesday, June 18	Thursday, June 19	Friday, June 20
Hot Lunch: Opa	Hot Lunch: Holy Grill	Hot Lunch: Bar Burrito		
<b>Day #6</b> <b>Dragon of the Month</b> <b>Presentations!</b>	<b>Day #1</b> <b>Grade Six and Grade Nine PAT:</b> <b>Math: Part B</b> <ul style="list-style-type: none"> <li>PALS - recess helpers - from 11:40 - 12:10</li> </ul>	<b>Day #2</b> <b>Grade Six and Grade Nine PAT:</b> <b>Social</b> <p><b>Kindergartens going Swimming</b></p> <p><b>Grade 7-9 French Field Trip</b></p> <ul style="list-style-type: none"> <li>PALS - recess helpers - from 11:40 - 12:10</li> <li>Recycling Club!</li> </ul>	<b>Day #3</b> <b>Grade Nine</b> <b>PAT: Science</b> <p><b>Kindergarten and Grade One to the Zoo</b></p> <p><b>Grade Four to Granary Road</b></p> <ul style="list-style-type: none"> <li>PALS - recess helpers - from 11:40 - 12:10</li> <li>Dungeons and Dragons Club - after school</li> </ul>	<b>PD Day - No School for Students</b> <p><b>Grade 9 Farewell @ 6:00 starting in Red Deer Lake Gymnasium</b></p>
Monday, June 23	Tuesday, June 24	Wednesday, June 25	Thursday, June 26	Friday, June 27
Hot Lunch: Opa	Hot Lunch: Holy Grill	Hot Lunch: Bar Burrito		
<b>Day #4</b> <b>Volunteer Ice Cream Social</b> <b>2:45 - 3:25</b> <b>Learning Commons</b> <p><b>Grade 5 to Heritage Park</b></p> <p><b>Grade 1 to Granary Road</b></p> <p><b>School Council Planning Meeting</b>  <b>2:00</b></p>	<b>Day #5</b> <b>Junior High Awards</b> <b>1:45 in the Gymnasium</b> <p><b>Elementary Sports Day</b>  <b>9:30 - 11:40</b></p> <ul style="list-style-type: none"> <li>PALS - recess helpers - from 11:40 - 12:10</li> </ul>	<b>Day #6</b> <b>Talent Show</b> <b>12:45 in the Gymnasium</b> <ul style="list-style-type: none"> <li>PALS - recess helpers - from 11:40 - 12:10</li> <li>Recycling Club!</li> </ul>	<b>Day #1</b> <b>Grade 6, 7, 8, and 9</b> <b>Callaway Park</b> <ul style="list-style-type: none"> <li>PALS - recess helpers - from 11:40 - 12:10</li> <li>Dungeons and Dragons Club - after school</li> </ul>	<b>Day #0</b> <b>Last Day of School</b> <p><b>Full Day of School</b></p> <p><b>Learner Profiles available on Edsembli</b></p> <ul style="list-style-type: none"> <li>PALS - recess helpers - from 11:40 - 12:10</li> <li>Dungeons and Dragons Club - after school</li> </ul>

## WHAT WE EXPECT FROM OUR PARTNERS IN EDUCATION



FOR OPINIONS, ASK FRIENDS, FAMILY, OR MAKE A RESPECTFUL POST ON SOCIAL MEDIA.

FOR FACTS AND RESOURCES TO ANSWER A QUESTION, GO TO THE SOURCE: DIVISION OR SCHOOL WEBSITES, SCHOOL PERSONNEL, OR DIVISION OFFICE.

Social media can be a wonderful communication tool, but it is not an effective way to get **factual answers** or **resolve concerns** about our students, staff members, or operations. Often, it can prolong the resolution process. When you have a question, concern, or feedback, please follow the steps within Administrative Procedure 151 - Parental/Guardian Complaints or Concerns and Dispute Resolution

### LEARN MORE:

- **Administrative Procedure 151:** Parental/Guardian Complaints or Concerns and Dispute Resolution
- **Administrative Procedure 146:** Social Media Code of Conduct
- **Administrative Procedure: 170:** Bullying, Harassment, and Threatening Behaviour

## HOW TO ADDRESS CONCERNS REGARDING A STUDENT OR LEARNING

### Questions related to a Student:

- Achievement
- Behavioural/Social
- Environment
- Instructional

Class Environment

School Bus



Respectfully communicate with the Teacher

Respectfully communicate with the Bus Driver

If the concern is not resolved



Respectfully communicate with the Principal

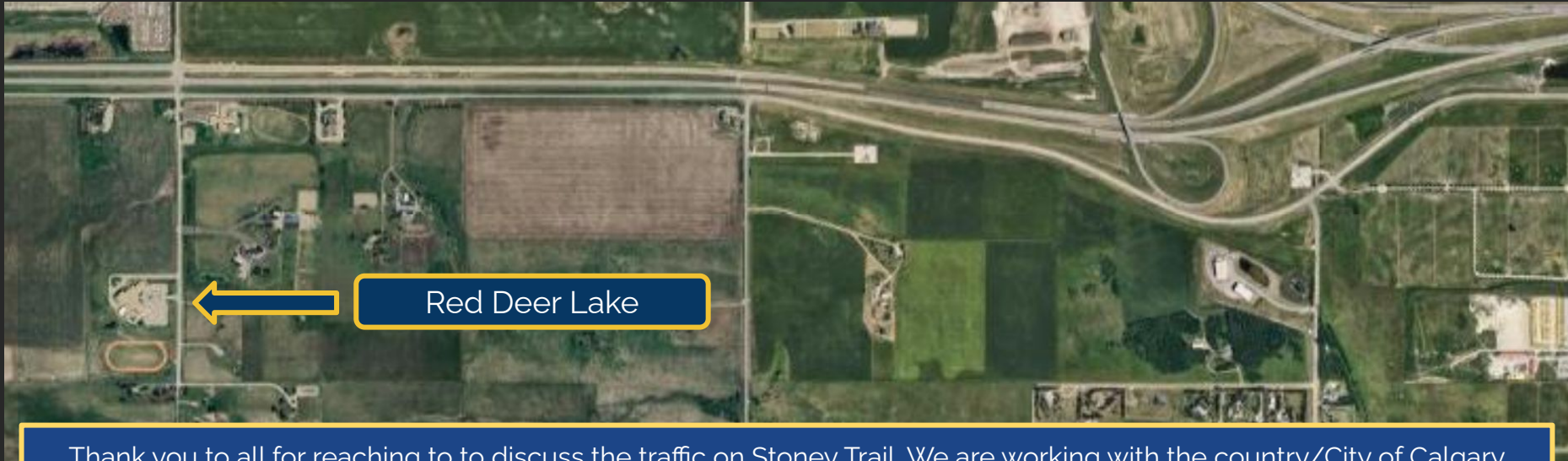
If the concern is not resolved



Contact Division Office  
Director of Education Partner Relations

Information that our School Council asked us to share regarding what to do when you have questions!

## Traffic @ Red Deer Lake



Thank you to all for reaching to to discuss the traffic on Stoney Trail. We are working with the country/City of Calgary regarding the lights as it appears that Tanbridge Academy's bell times have been changed to be closer to our arrival and dismissal bell, which has led to the increased congestion.

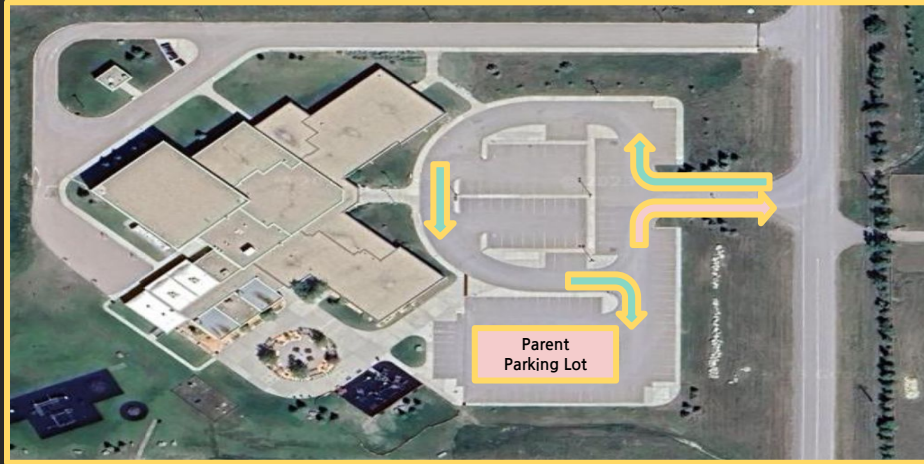
A few idea to alleviate this while we work through solutions.: You can always take 'Spruce Meadows Green' which is the road directly south of Stoney Trail / 22x which connects with James McKeivitt Way and Spruce Meadows Way.

Carpooling is another option to consider to help with the traffic.

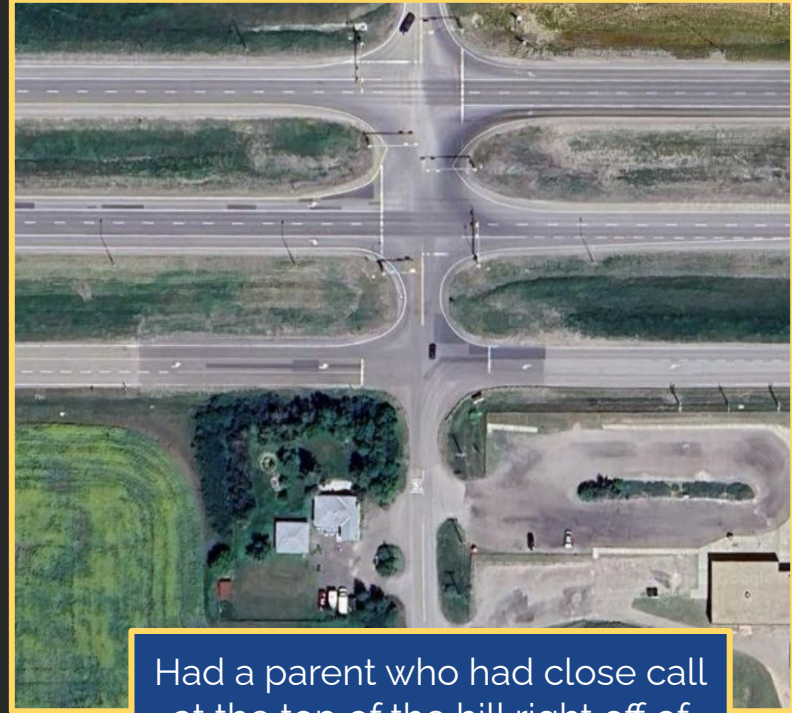
As always, here to support and help!



## Traffic and Parking at Red Deer Lake



A reminder that there is a 'one way' to enter the parking lot.  
The parent parking lot is on the south end!



Had a parent who had close call  
at the top of the hill right off of  
Highway 22x and Tanbridge  
Academy. A friendly reminder  
that it is a three way stop!

# Bell Times

	End Time	Elementary	Junior High
8:25	8:35	Mindfulness / Homeroom	
8:35	9:20	Period 1	
9:20	10:05	Period 2	
10:05	10:10	Nutrition Break	
10:10	10:55	Period 3	
10:55	11:40	Period 4	
11:40	12:10	1st Recess	
12:10	12:40	Lunch	
12:40	1:25	Period 5	
1:25	1:55	2nd Recess	FLEX
1:55	2:40	Period 6	
2:40	3:25	Period 7	

# USE OF MOBILE DEVICES IN SCHOOLS

EFFECTIVE SEPTEMBER 1, 2024

## WHAT ARE MOBILE AND SMART DEVICES?

Personal mobile and smart devices can be used to communicate with or access the internet. This includes a cell phone, tablet, laptop, or smartwatch, as well as their accessories, such as earbuds.

Other communication and internet-capable devices apply.



## INSTRUCTIONAL VS. NON-INSTRUCTIONAL TIME



**Instructional Time** is the time dedicated during the school day to teaching subject area and curricular content and that is supervised by a teacher or other member of the school staff team.

**Non-Instructional Time** is school designated time that includes the time before and after school, lunch, recess, or another school-designated break in instructional time.



## EXPECTATIONS FOR STUDENT PERSONAL AND SMART DEVICES



Devices are powered off and stored out of view during instructional time\*

Junior Kindergarten to Grade 12



Devices may be powered on and used during non-instructional time

Grade 7 - Grade 12



Devices are powered off and stored out of view during non-instructional time\*

Junior Kindergarten to Grade 6



Social media sites are blocked on FSD Routers at all times

All school sites



Families may contact the School Office to relay urgent messages to a student. Students may utilize designated school phones to contact family members for urgent matters.

\* Exemptions for personal mobile and smart device use for students with documented medical and/or assistive technology needs as outlined in AP 350. Families can work with school staff and administration to assure requisite exemptions are in place. Personal devices may be employed under direction of a teacher for academic use in grades 7 - 12.

For more information please see Administrative Procedure 350 - Respect for All  
in accordance with Ministerial Order #014/2024

The new provincial mandate regarding mobile devices does not change much for what we have been doing at Red Deer Lake. However, a few pieces of information regarding our context:

- **All Mobile and Smart devices are powered off and out of view from 8:15 - 3:35 at Red Deer Lake from K-9.** We have received incredible feedback in previous years that this has been beneficial to our student population.
- If you have a get a hold of your child, please phone the office. We promise to get them so you can chat!



## PARENT GUIDE TO ASSESSMENT & REPORTING

### Multiple Modes of Assessment



- Quality assessment and evaluation are crucial for improving student learning.
- Ongoing research-based assessment and reporting can guide teachers in adjusting instruction, monitoring progress, providing effective feedback, and assessing student learning.
- Collaboration between parents, educators, and students is also important for student success.

3/7

## GRADE LEVELS OF ACHIEVEMENT

### Grades K - 8

Levels of Achievement are the scores teachers in kindergarten through to grade 8 use to indicate a student's level of performance, in relation to the grade level outcomes in the Alberta Curriculum. This is a 5-point system.

1

Student is not yet demonstrating knowledge and skills as outlined in the Alberta Curriculum.

2

Student is demonstrating partial knowledge and skills and is approaching an understanding of the concepts as outlined in the Alberta Curriculum.

3

Student is demonstrating satisfactory knowledge and skills and is developing an understanding with general application of the concepts as outlined in the Alberta Curriculum.

4

Student is demonstrating substantial knowledge and skills and shows comprehensive understanding with relevant application of the concepts as outlined in the Alberta Curriculum.

5

Student is demonstrating extensive knowledge and skills and shows a depth of understanding with thorough application of the concepts as outlined in the Alberta Curriculum.



### Grades 9 - 12

Grade levels of achievement for students in grades 9 through 12 are percentage-based; however, teachers will communicate how these grades are determined for each class.

# Foothills School Division Calendar: 2024/2025



## 2024-2025 INSTRUCTIONAL CALENDAR

Schools are closed on grey shaded days	<b>AUGUST 2024</b>	<b>SEPTEMBER 2024</b>	<b>OCTOBER 2024</b>
Public Board Meeting 1pm	Su Mo Tu We Th Fr Sa	Su Mo Tu We Th Fr Sa	Su Mo Tu We Th Fr Sa
Aug. 23 Schools open for registration	1 2 3	1 2 3 4 5 6 7	1 2 3 4 5
Aug. 26-29 Non-instructional Days	4 5 6 7 8 9 10	8 9 10 11 12 13 14	6 7 8 9 10 11 12
Aug. 30 Student Transition Day	11 12 13 14 15 16 17	15 16 17 18 19 20 21	13 14 15 16 17 18 19
Sept. 2 Labour Day	18 19 20 21 22 23 24	22 23 24 25 26 27 28	20 21 22 23 24 25 26
Sep. 3 Semester 1 Begins	25 26 27 28 29 30 31	29 30	27 28 29 30 31
Sep. 27 Non-instructional Day			
Sep. 30 National Day for Truth & Reconciliation			
Oct. 14 Thanksgiving			
Nov. 1 Non-instructional Day			
Nov. 11 Remembrance Day			
Nov. 12-15 Fall Break			
Nov. 18-19 Learner Conferences			
Dec. 13 Non-instructional Day			
Dec. 23-Jan. 3 Winter Break			
Jan. 29 Semester 2 Begins			
Jan. 31 Non-instructional Day Elem. & Junior High			
Feb. 3-14 Learner Profiles			
Feb. 17 Family Day			
Feb. 18 School Closed			
Feb. 19 Non-instructional Day			
Feb. 20-21 Teacher's Convention			
Mar. 21 Non-instructional Day			
Mar. 31 Non-instructional Day			
Apr. 14-17 & 28-30 Learner Conferences			
Apr. 18 Good Friday			
Apr. 21 Easter Monday			
Apr. 22-25 Spring Break			
May 16 Non-instructional Day			
May 19 Victoria Day			
Jun. 20 Non-instructional Day Elem. & Junior High			
Jun. 26-27 Learner Profiles			
Jun. 27 Final Day of Classes			
Jun. 30 Non-instructional Day			
	<b>NOVEMBER 2024</b>	<b>DECEMBER 2024</b>	<b>JANUARY 2025</b>
	Su Mo Tu We Th Fr Sa	Su Mo Tu We Th Fr Sa	Su Mo Tu We Th Fr Sa
	1 2	1 2 3 4 5 6 7	1 2 3 4
	3 4 5 6 7 8 9	8 9 10 11 12 13 14	5 6 7 8 9 10 11
	10 11 12 13 14 15 16	15 16 17 18 19 20 21	12 13 14 15 16 17 18
	17 18 19 20 21 22 23	22 23 24 25 26 27 28	19 20 21 22 23 24 25
	24 25 26 27 28 29 30	29 30 31	26 27 28 30 31
	<b>FEBRUARY 2025</b>	<b>MARCH 2025</b>	<b>APRIL 2025</b>
	Su Mo Tu We Th Fr Sa	Su Mo Tu We Th Fr Sa	Su Mo Tu We Th Fr Sa
	1	1	1 2 3 4 5
	2 3 4 5 6 7 8	2 3 4 5 6 7 8	6 7 8 9 10 11 12
	9 10 11 12 13 14 15	9 10 11 12 13 14 15	13 14 15 16 17 18 19
	16 17 18 19 20 21 22	16 17 18 19 20 21 22	20 21 22 23 24 25 26
	23 24 25 26 27 28	23 24 25 26 27 28 29	27 28 29 30
	<b>MAY 2025</b>	<b>JUNE 2025</b>	<b>JULY 2025</b>
	Su Mo Tu We Th Fr Sa	Su Mo Tu We Th Fr Sa	Su Mo Tu We Th Fr Sa
	1 2 3	1 2 3 4 5 6 7	1 2 3 4 5
	4 5 6 7 8 9 10	8 9 10 11 12 13 14	6 7 8 9 10 11 12
	11 12 13 14 15 16 17	15 16 17 18 19 20 21	13 14 15 16 17 18 19
	18 19 20 21 22 23 24	22 23 24 25 26 27 28	20 21 22 23 24 25 26
	25 26 27 28 29 30 31	29 30	27 28 29 30 31