

June 2 - June 13

BELONG. BELIEVE. BECOME.

BE A DRAGON.

Belong

PEOPLE WILL FORGET WHAT WE
SAID, PEOPLE WILL FORGET
WHAT WE DID, BUT PEOPLE WILL
NEVER FORGET HOW WE MADE
THEM FEEL.

WE ARE CURIOUS, NOT
JUDGMENTAL

Believe

WE ARE BRAVER THAN WE
BELIEVE, STRONGER THAN WE
SEEM, AND SMARTER THAN WE
THINK.

NOT ALL THOSE WHO WANDER
ARE LOST

Become

THE ONLY PERSON WE ARE
DESTINED TO BECOME IS THE
PERSON WE DECIDE TO BE.

- Looking for parent volunteers to help with the Grade $\frac{4}{5}$ track meet on Friday, June 13th. If you are available, please email Ms. Dixon at: dixonnn@fsd38.ab.ca
- Band Performance - Grades 6 - 9: Thursday, June 5: 2:00 - 3:00 (Matinee) and 6:30 - 7:30. Doors open and kids in the band room by 6:00, please.
- Talent show auditions: June 5: Grade 1-3 / June 6: Grade 4 - 9
- <https://bit.ly/rdlyearbook25> - please navigate to this link to purchase a yearbook!
- Please complete this survey to help us know what we need for sensory items: [RDL - Sensory Spaces](#)
- Are you leaving Red Deer Lake next year? Please let us know in this form: [Red Deer Lake - 2025](#)

June 2 - June 13

BELONG. BELIEVE. BECOME.

BE A DRAGON.

Belong

PEOPLE WILL FORGET WHAT WE
SAID, PEOPLE WILL FORGET
WHAT WE DID, BUT PEOPLE WILL
NEVER FORGET HOW WE MADE
THEM FEEL.

WE ARE CURIOUS, NOT
JUDGMENTAL

Believe

WE ARE BRAVER THAN WE
BELIEVE, STRONGER THAN WE
SEEM, AND SMARTER THAN WE
THINK.

NOT ALL THOSE WHO WANDER
ARE LOST

Become

THE ONLY PERSON WE ARE
DESTINED TO BECOME IS THE
PERSON WE DECIDE TO BE.

Registration for Transportation closes May 31.

More students are now eligible to ride the bus next fall. Students qualify for transportation based on the following conditions:

- Students registered in Foothills School Division (FSD) and attending a school within their designated attendance boundary; or
- Students directed to a school outside their attendance boundary school for FSD some regional programs (these include French Immersion, and inclusive learning programs); and
- Students whose residence (home address) is:
 - 1.6 km* or more from their designated school for students in Kindergarten to grade 6
 - 2.0 km* or more from their designated school for students in grades 7 to 12

Applying for Transportation

- For returning students, registration is now open until May 31, 2025.
- The student address on the application must match what is on file in Edsembli
- If your address has changed, please update your student's information via the Student Verification form on the Edsembli Family Portal before submitting the application

Apply for Transportation today

Transportation Fees

To meet increasing costs in Transportation, a nominal fee will be applied to approved bus riders:

- \$100 per rider
- Maximum \$250 fee per household
- The fee will be applied to student accounts on Edsembli in June after approval.
 - Fees are to be paid before a rider is assigned to a route
 - Payment of fees are required by June 30, 2025

June 2 - June 13

BELONG. BELIEVE. BECOME.

BE A DRAGON.

Belong

PEOPLE WILL FORGET WHAT WE
SAID, PEOPLE WILL FORGET
WHAT WE DID, BUT PEOPLE WILL
NEVER FORGET HOW WE MADE
THEM FEEL.

WE ARE CURIOUS, NOT
JUDGMENTAL

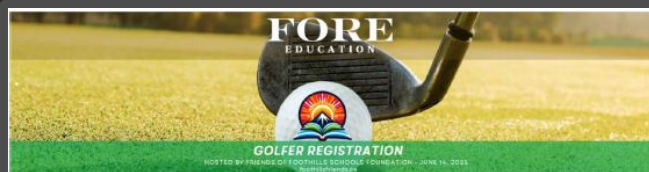
Believe

WE ARE BRAVER THAN WE
BELIEVE, STRONGER THAN WE
SEEM, AND SMARTER THAN WE
THINK.

NOT ALL THOSE WHO WANDER
ARE LOST

Become

THE ONLY PERSON WE ARE
DESTINED TO BECOME IS THE
PERSON WE DECIDE TO BE.



Golf season is just around the corner! We hope that you will join us and **Flames Alumni Archie Henderson & Kris Kolanos**, at the beautiful Highwood Golf Course on June 14, 2025, for an exhilarating day of golf supporting the students of Foothills School Division and our community.

Registration is now open for the **2nd ANNUAL FRIENDS OF FOOTHILLS SCHOOLS FOUNDATION Golf Tournament**.

Early bird pricing will be in effect until **MAY 25, 2025**.

Every student deserves the chance to learn and grow in the best possible way. By supporting this golf tournament and the Foundation, you help make exciting and innovative educational opportunities a reality for students in the Foothills School Division. Thanks to past efforts, we've been able to support funding for things like a Shark CNC router, upgrades to a theatre lighting system, and purchase a Versa Cold Food Table to serve fresh produce from a school's tower gardening project to its students. The next wave of grant requests will foster dreams, unleash creativity, and open doors to new horizons.

Our goal is to raise \$15,000, which will directly benefit Foothills students through the Friends of Foothills Schools Foundation. This tournament is one of many ways we're working to ensure all students have access to the tools and resources they need to thrive. Together, we can create a stronger, more connected community, one where learning has no limits.

EVENT DETAILS

When: Saturday, June 14, 2025

11:00 pm – Registration

1:00 pm Shotgun Start

Dinner, Prizes to follow

Where: Highwood Golf Club, 400 7th St. NW, High River, AB, T1V 1M6

REGISTRATION DETAILS

Team Registration: \$800 (Team of Four) \$1000 after May 18th

Individual Registration: \$225 (\$70 tax receipt) \$275 after May 18th

For more information and to register, visit foothillsfriends.ca

Monday, June 2	Tuesday, June 3	Wednesday, June 4	Thursday, June 5	Friday, June 6
Hot Lunch: Little Caesars	Hot Lunch: Bar Burrito			Hot Lunch: Hot Dogs
Day #2	Day #3 <ul style="list-style-type: none"> PALS - recess helpers - from 11:40 - 12:10 	Day #4 Kindergarten Field Trip <ul style="list-style-type: none"> PALS - recess helpers - from 11:40 - 12:10 Recycling Club! 	Day #5 Band Performance Grade 6 - 9 Matinee from 2:00 - 3:00 Evening from 6:30 - 7:30 Talent Show Auditions for K-3 <ul style="list-style-type: none"> PALS - recess helpers - from 11:40 - 12:10 Dungeons and Dragons Club - after school 	Day #6 Freezie Friday (\$1) Talent Show Auditions for 4 - 9 Last Day to Take Books out of the Library <ul style="list-style-type: none"> Wear your Dragon SWAG
Monday, June 9	Tuesday, June 10	Wednesday, June 11	Thursday, June 12	Friday, June 13
Hot Lunch: Booster Juice	Hot Lunch: Little Caesars			Hot Lunch: Hot Dogs
Day #2 Mountain Biking: PEE	Day #3 Kindergarten Field Trip Grade Four Field Trip Canoeing: PEE <ul style="list-style-type: none"> PALS - recess helpers - from 11:40 - 12:10 	Day #4 Kindergarten Field Trip <ul style="list-style-type: none"> PALS - recess helpers - from 11:40 - 12:10 Recycling Club! 	Day #5 Grade Six and Grade Nine PAT: ELA: Part B <ul style="list-style-type: none"> PALS - recess helpers - from 11:40 - 12:10 Dungeons and Dragons Club - after school 	Day #6 Grade Six and Grade Nine PAT: Math: Part A Freezie Friday (\$1) Elementary Sports Day Spulumbo's Order Pick Up <ul style="list-style-type: none"> Wear your Dragon SWAG

AVAILABLE FOR HIRE

ZORA BABYSITTING



PRICES ARE NEGOTIABLE

1-2 KIDS = \$20

3-4 KIDS = \$30

MONDAY, WEDNESDAY,
THURSDAY, FRIDAY
AND WEEKENDS

Hello, we are Zettie and
Norah. Two responsible 14
year olds. We love children,
animals and crafts.

Contact information-
(587) 971-4594
(403) 619-3725

zlgorham11@gmail.com
nlh_5@icloud.com

Why trust us?

- have completed the
babysitting course
- We both deeply care for children
- We can cook and clean
- We will accommodate
to your rules.

Extra info-

- For safety reasons we only babysit
1-4 kids at a time, plus any pets
- Our preferred ages are 1-9 years
old.
- We have babysitting information
sheets, you need to fill out before
we babysit your kids.

Zora

BABYSITTING

Upcoming Events

Provincial Achievement Test Dates

Grade Six

- Wednesday: May 28: 9:00 - 11:00: English Language Arts: Part A
- Thursday: June 12: 9:00 - 10:00: English Language Arts: Part B
- Friday: June 13: 9:00 - 9:20: Mathematics: Part A
- Tuesday: June 17: 9:00 - 10:10: Mathematics: Part B
- Wednesday: June 18: 9:00 - 10:00: Social Studies

Grade Nine:

- Thursday, May 29: 9:00 - 11:00: English Language Arts: Part A
- Thursday, June 12: 9:00 - 10:15: English Language Arts: Part B
- Friday: June 13: 9:00 - 9:30: Mathematics: Part A
- Tuesday: June 17: 9:00 - 10:20: Mathematics: Part B
- Wednesday: June 18: 9:00 - 10:20: Social Studies
- Thursday, June 19: 9:00 - 10:15: Science

WHAT WE EXPECT FROM OUR PARTNERS IN EDUCATION



FOR OPINIONS, ASK FRIENDS, FAMILY, OR MAKE A RESPECTFUL POST ON SOCIAL MEDIA.

FOR FACTS AND RESOURCES TO ANSWER A QUESTION, GO TO THE SOURCE: DIVISION OR SCHOOL WEBSITES, SCHOOL PERSONNEL, OR DIVISION OFFICE.

Social media can be a wonderful communication tool, but it is not an effective way to get **factual answers** or **resolve concerns** about our students, staff members, or operations. Often, it can prolong the resolution process. When you have a question, concern, or feedback, please follow the steps within Administrative Procedure 151 - Parental/Guardian Complaints or Concerns and Dispute Resolution

LEARN MORE:

- **Administrative Procedure 151:** Parental/Guardian Complaints or Concerns and Dispute Resolution
- **Administrative Procedure 146:** Social Media Code of Conduct
- **Administrative Procedure: 170:** Bullying, Harassment, and Threatening Behaviour

HOW TO ADDRESS CONCERNS REGARDING A STUDENT OR LEARNING

Questions related to a Student:

- Achievement
- Behavioural/Social
- Environment
- Instructional

Class Environment

School Bus



Respectfully communicate with the Teacher

Respectfully communicate with the Bus Driver

If the concern is not resolved



Respectfully communicate with the Principal

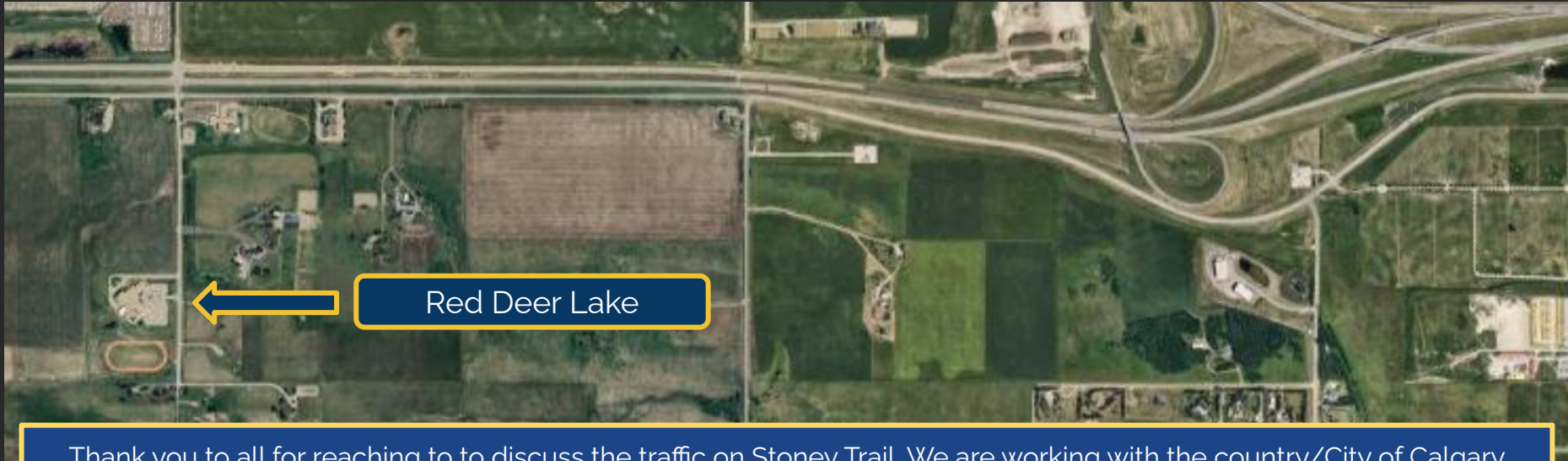
If the concern is not resolved



Contact Division Office
Director of Education Partner Relations

Information that our School Council asked us to share regarding what to do when you have questions!

Traffic @ Red Deer Lake



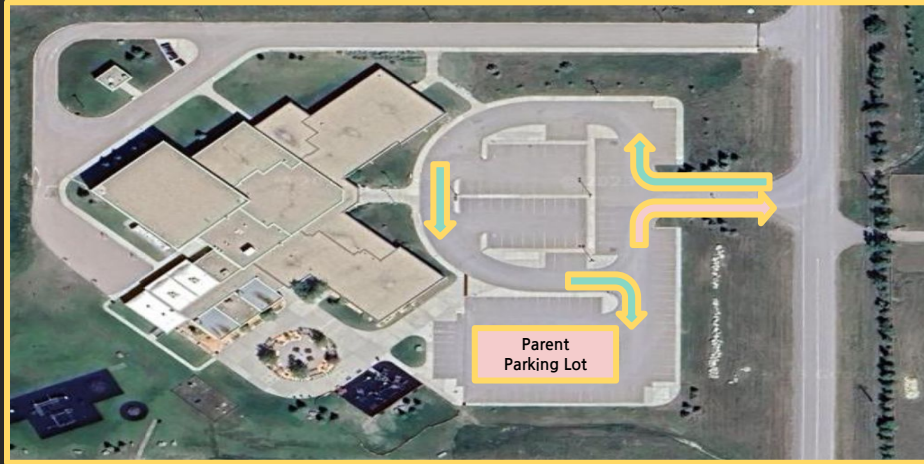
Thank you to all for reaching to to discuss the traffic on Stoney Trail. We are working with the country/City of Calgary regarding the lights as it appears that Tanbridge Academy's bell times have been changed to be closer to our arrival and dismissal bell, which has led to the increased congestion.

A few idea to alleviate this while we work through solutions.: You can always take 'Spruce Meadows Green' which is the road directly south of Stoney Trail / 22x which connects with James McKeivitt Way and Spruce Meadows Way.

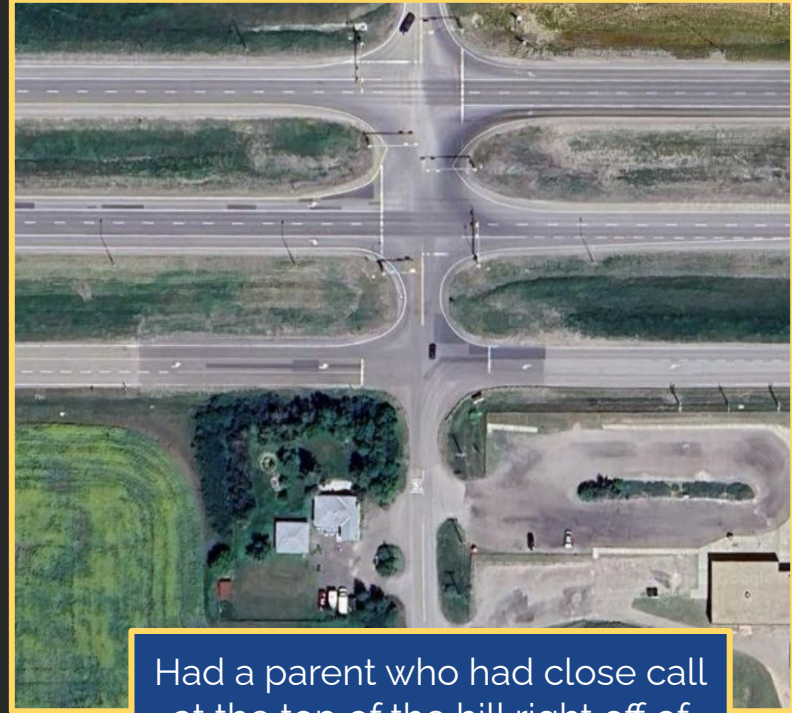
Carpooling is another option to consider to help with the traffic.

As always, here to support and help!

Traffic and Parking at Red Deer Lake



A reminder that there is a 'one way' to enter the parking lot.
The parent parking lot is on the south end!



Had a parent who had close call
at the top of the hill right off of
Highway 22x and Tanbridge
Academy. A friendly reminder
that it is a three way stop!

Bell Times

	End Time	Elementary	Junior High
8:25	8:35	Mindfulness / Homeroom	
8:35	9:20	Period 1	
9:20	10:05	Period 2	
10:05	10:10	Nutrition Break	
10:10	10:55	Period 3	
10:55	11:40	Period 4	
11:40	12:10	1st Recess	
12:10	12:40	Lunch	
12:40	1:25	Period 5	
1:25	1:55	2nd Recess	FLEX
1:55	2:40	Period 6	
2:40	3:25	Period 7	

USE OF MOBILE DEVICES IN SCHOOLS

EFFECTIVE SEPTEMBER 1, 2024

WHAT ARE MOBILE AND SMART DEVICES?

Personal mobile and smart devices can be used to communicate with or access the internet. This includes a cell phone, tablet, laptop, or smartwatch, as well as their accessories, such as earbuds.

Other communication and internet-capable devices apply.



INSTRUCTIONAL VS. NON-INSTRUCTIONAL TIME



Instructional Time is the time dedicated during the school day to teaching subject area and curricular content and that is supervised by a teacher or other member of the school staff team.

Non-Instructional Time is school designated time that includes the time before and after school, lunch, recess, or another school-designated break in instructional time.



EXPECTATIONS FOR STUDENT PERSONAL AND SMART DEVICES



Devices are powered off and stored out of view during instructional time*

Junior Kindergarten to Grade 12



Devices may be powered on and used during non-instructional time

Grade 7 - Grade 12



Devices are powered off and stored out of view during non-instructional time*

Junior Kindergarten to Grade 6



Social media sites are blocked on FSD Routers at all times

All school sites



Families may contact the School Office to relay urgent messages to a student. Students may utilize designated school phones to contact family members for urgent matters.

* Exemptions for personal mobile and smart device use for students with documented medical and/or assistive technology needs as outlined in AP 350. Families can work with school staff and administration to assure requisite exemptions are in place. Personal devices may be employed under direction of a teacher for academic use in grades 7 - 12.

For more information please see Administrative Procedure 350 - Respect for All
in accordance with Ministerial Order #014/2024

The new provincial mandate regarding mobile devices does not change much for what we have been doing at Red Deer Lake. However, a few pieces of information regarding our context:

- **All Mobile and Smart devices are powered off and out of view from 8:15 - 3:35 at Red Deer Lake from K-9.** We have received incredible feedback in previous years that this has been beneficial to our student population.
- If you have a get a hold of your child, please phone the office. We promise to get them so you can chat!

PARENT GUIDE TO ASSESSMENT & REPORTING

Multiple Modes of Assessment



- Quality assessment and evaluation are crucial for improving student learning.
- Ongoing research-based assessment and reporting can guide teachers in adjusting instruction, monitoring progress, providing effective feedback, and assessing student learning.
- Collaboration between parents, educators, and students is also important for student success.

3/7

GRADE LEVELS OF ACHIEVEMENT

Grades K - 8

Levels of Achievement are the scores teachers in kindergarten through to grade 8 use to indicate a student's level of performance, in relation to the grade level outcomes in the Alberta Curriculum. This is a 5-point system.

1

Student is not yet demonstrating knowledge and skills as outlined in the Alberta Curriculum.

2

Student is demonstrating partial knowledge and skills and is approaching an understanding of the concepts as outlined in the Alberta Curriculum.

3

Student is demonstrating satisfactory knowledge and skills and is developing an understanding with general application of the concepts as outlined in the Alberta Curriculum.

4

Student is demonstrating substantial knowledge and skills and shows comprehensive understanding with relevant application of the concepts as outlined in the Alberta Curriculum.

5

Student is demonstrating extensive knowledge and skills and shows a depth of understanding with thorough application of the concepts as outlined in the Alberta Curriculum.



Grades 9 - 12

Grade levels of achievement for students in grades 9 through 12 are percentage-based; however, teachers will communicate how these grades are determined for each class.

