

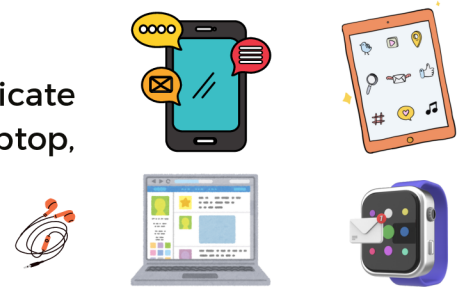
USE OF MOBILE DEVICES IN SCHOOLS

EFFECTIVE SEPTEMBER 1, 2024

WHAT ARE MOBILE AND SMART DEVICES?

Personal mobile and smart devices can be used to communicate with or access the internet. This includes a cell phone, tablet, laptop, or smartwatch, as well as their accessories, such as earbuds.

Other communication and internet-capable devices apply.



INSTRUCTIONAL VS. NON-INSTRUCTIONAL TIME

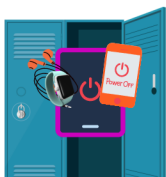


Instructional Time is the time dedicated during the school day to teaching subject area and curricular content and that is supervised by a teacher or other member of the school staff team.

Non-Instructional Time is school designated time that includes the time before and after school, lunch, recess, or another school-designated break in instructional time.



EXPECTATIONS FOR STUDENT PERSONAL AND SMART DEVICES



Devices are powered off and stored out of view during instructional time*

Junior Kindergarten to Grade 12



Devices may be powered on and used during non-instructional time

Grade 7 - Grade 12



Devices are powered off and stored out of view during non-instructional time*

Junior Kindergarten to Grade 6



Social media sites are blocked on FSD Routers at all times

All school sites



Families may contact the School Office to relay urgent messages to a student. Students may utilize designated school phones to contact family members for urgent matters.

* Exemptions for personal mobile and smart device use for students with documented medical and/or assistive technology needs as outlined in AP 350. Families can work with school staff and administration to assure requisite exemptions are in place. Personal devices may be employed under direction of a teacher for academic use in grades 7 - 12.

**For more information please see Administrative Procedure 350 - Respect for All
In accordance with Ministerial Order #014/2024**