

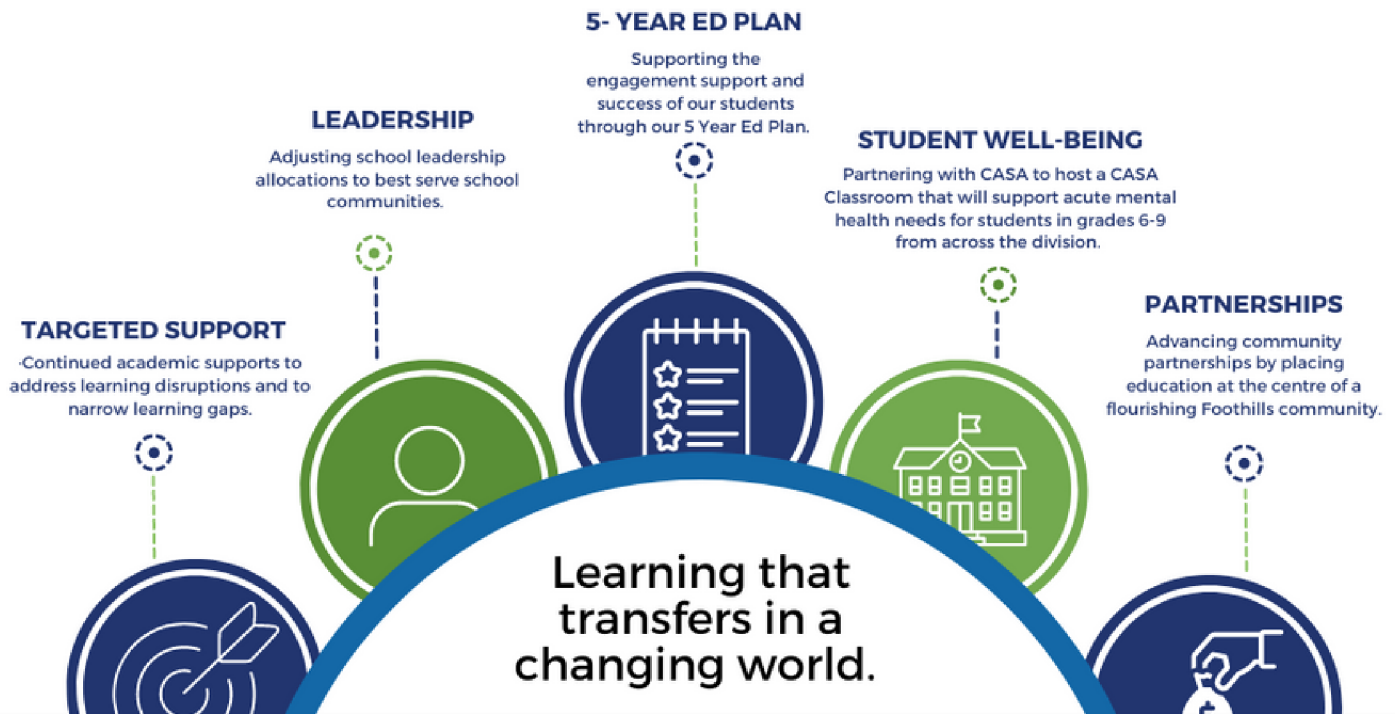
## LEARNING THAT TRANSFERS IN A CHANGING WORLD

Adapting to the world around us is a priority to advance learning that transfers. Not only is it a part of our Education Plan, but also our business model. The *Funding Profile* from the Government of Alberta aims to address the instruction of students in our division while achieving the province’s mandates and budget. To promote education at the centre of a flourishing community we seek opportunities to further learning opportunities by creating partnerships and realizing operational efficiencies to best serve our students in our ever-changing world.

Our 2024-2025 budget is set to achieve the goals within our 2024-2029 Year 1 Education Plan.

View our Education Plan: [bit.ly/FSD\\_EdPlan](https://bit.ly/FSD_EdPlan)

View our Annual Budget: [bit.ly/FSD\\_Budget](https://bit.ly/FSD_Budget)



## WEIGHTED MOVING AVERAGE

Enrolment for 2023-2024 was lower-than projected, resulting in a reduction in funding for 2024-2025.

The three-year weighted moving average is calculated using the following information:

SCHOOL YEAR	WEIGHTED FACTOR	ENROLMENT COUNT
2022-2023	20%	Actual
2023-2024	30%	Estimate
2024-2025	50%	Projection

# REVENUES VS. EXPENSES 2024-2025

## ENROLMENT

**7614**

Kindergarten (0.5 FTE)*	250
Grades 1 - 9	5,286
Grades 10 - 12	2,078

\*500 students = 250 FTE

## REVENUES

**\$100.03 M**

Gov't Alberta	\$94,975,942
Gov't Canada	\$ 315,000
Fees , Fundraising & Donations	\$ 4,663,510
Other	\$ 77,500

## EXPENSES

**\$100.56 M**

Instruction	\$77,331,227
Administration	\$ 3,149,445
Operations & Maint.	\$8,995,892
Transportation	\$5,280,363
Supported Capital & Debt Services	\$5,806,861

## REVENUES \$100.03 M

## EXPENDITURES \$100.56 M

Fees, Fundraising & Donations 4.66%

Other 0.08%

Government of Canada 0.31%

Alberta Education  
94.5%

Instruction  
77%

Operations & Maintenance 9%

Supported Capital & Debt Services 6%

Transportation 5%

Administration 3%

**DEFICIT -\$531,836**

## OPERATING & CAPITAL RESERVES FYI



Utilizing funds in Operating Reserves allow the Division to continue high-quality learning opportunities.

Divisions can move funds into Capital Reserves in anticipation of large expenses in the future, like purchasing 13 school buses,



Transfers into and out of the Reserve funds requires prior approval from the Government of Alberta.

FSD has been reducing the Operating Reserves amount to meet the government's target of 3.2% of the division's expenditures.



## Your Trustees

WARD 1 - Jack Molyneux  
WARD 2 - John Evans  
WARD 3 - Theresa Letendre, Chair  
WARD 4 - Sharon Nichols  
WARD 4 - Lisa Penzo, Vice Chair  
WARD 5 - Phil Irwin

## Your Executive Team

Superintendent of Schools - Chris Fuzessy  
Assistant Superintendent, Corporate Services - Drew Chipman  
Assistant Superintendent, Learning Services - Caroline Roberts  
Assistant Superintendent, Employee Services - Allen Davidson