

ÉCOLE JOE CLARK SCHOOL

Believe in yourself,
découvrez le LEADER en vous!



STUDENT / PARENT AGENDA 2023—2024

Right Honourable École Joe Clark School
École Le Très Honorable Joe Clark



Parent / Student Handbook 2023 - 2024

Principal – Mrs. Jolene Becker	E-mail: beckerj@fsd38.ab.ca Phone: 403-652-2020 Ext: 15715
Vice-Principal – Ms Corre Mahan	E-mail: mahanc@fsd38.ab.ca Phone: 403-652-2020 Ext: 15716

Foothills School Division's Website http://www.fsd38.ab.ca	École Joe Clark School's Website http://joelclark.fsd38.ab.ca <i>Bookmark our website to keep up to date on what's happening in our school!</i>
--	--

École Joe Clark School
1208 9th Avenue SE
High River, Alberta
T1V 1L2
School Telephone: 403-652-2020

Instagram: [joelclarkschool](#)

Facebook: École Joe Clark School – Parent Council

Phone in For Safety!

When your child will be late or absent from school, please
call the school absence line at
403-652-2020 - extension 1

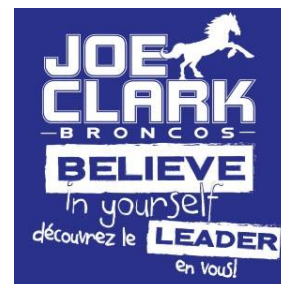


[illegible]

2023 - 2024 Kindergarten Calendar Final Version -April 21st, 2023

<p>Staggered Entry for Students – August 31 & September 1</p> <p>Last Day of School – June 27, 2024</p>
Statutory Day
Christmas/Easter Break
Local Professional Learning Day
Operations Day
Divisional Learning Day

Local Professional Learning Day including Support Staff
Schools Closed
Reading Break
Elem/Jr School PD
Teachers' Convention
Opening Day for Staff

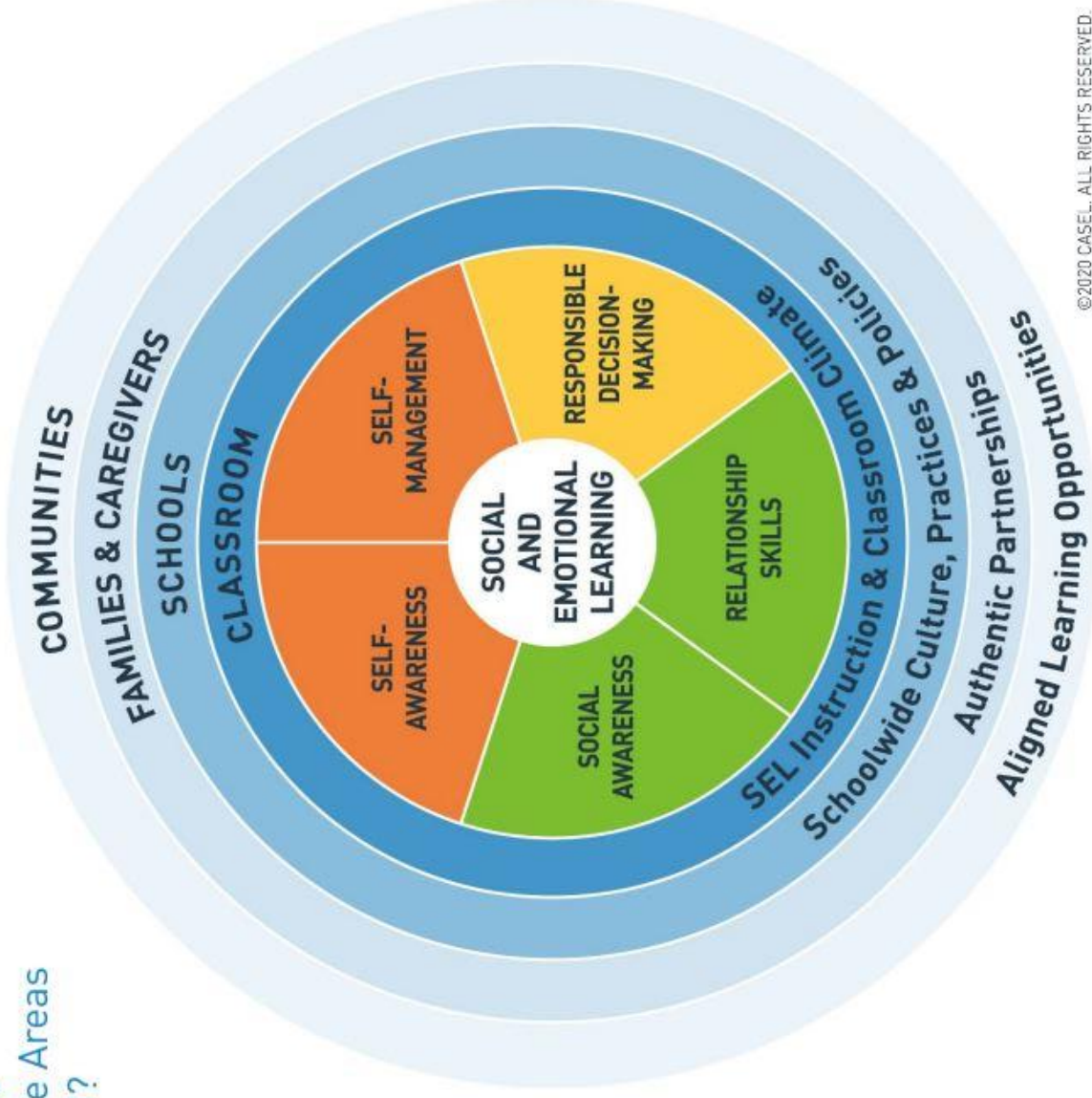


CASEL'S SEL FRAMEWORK:

What Are the Core Competence Areas and Where Are They Promoted?

Social and emotional learning (SEL) is an integral part of education and human development. SEL is the process through which all young people and adults acquire and apply the knowledge, skills, and attitudes to develop healthy identities, manage emotions and achieve personal and collective goals, feel and show empathy for others, establish and maintain supportive relationships, and make responsible and caring decisions.

SEL advances educational equity and excellence through authentic school-family-community partnerships to establish learning environments and experiences that feature trusting and collaborative relationships, rigorous and meaningful curriculum and instruction, and ongoing evaluation. SEL can help address various forms of inequity and empower young people and adults to co-create thriving schools and contribute to safe, healthy, and just communities.



©2020 CASEL. ALL RIGHTS RESERVED.



Learn more: www.casel.org/what-is-SEL