

FOOTNOTES

steps toward a flourishing community

March 2025

INFORMED INSIGHTS: SETTING THE STAGE FOR BALANCED DECISIONS

- In Alberta's Budget 2025, the **K-12 education operating budget** is slated to increase to \$9.9 billion. Despite further investment, the base funding for boards, including FSD, will not increase.
- **Funding to school boards** is now based on a weighted average of two years; 30% on this year's enrollment and 70% on next year's projected enrollment. This funding model is to address enrollment growth. FSD projections are for a 2.5% reduction in enrolment due to smaller cohorts entering the system (fewer kindergarten students are entering than grade 12's graduating).
- FSD received its Funding Profile from the Province in late March and indicates a reduction of funding. FSD is connecting with the Province to understand the impact to the board and to advocate for funding for student learning. Based on that profile, the **FSD Budget** will be presented at the May 28, 2025 Board Meeting.

WELCOME

Welcome to the Footnotes, a monthly newsletter showcasing how Foothills School Division (FSD) is placing students at the centre of a flourishing learning community.

These highlights provide important context for the decisions ahead, ensuring our school community understands how funding realities impact our division. The Board remains committed to a balanced and strategic approach— making decisions that align with the Foothills School Division's goals and priorities.

EDUCATION PROPERTY TAX (EPT)

The education tax, which is collected by municipalities on behalf of the province, is increasing from 28.5% to 31.6% for the 2025-2026 year and then to 33% in 2026-2027.

How does the province collect the education property tax?

Every year the province calculates, based on assessment value, the amount each municipality must contribute towards the public education system.

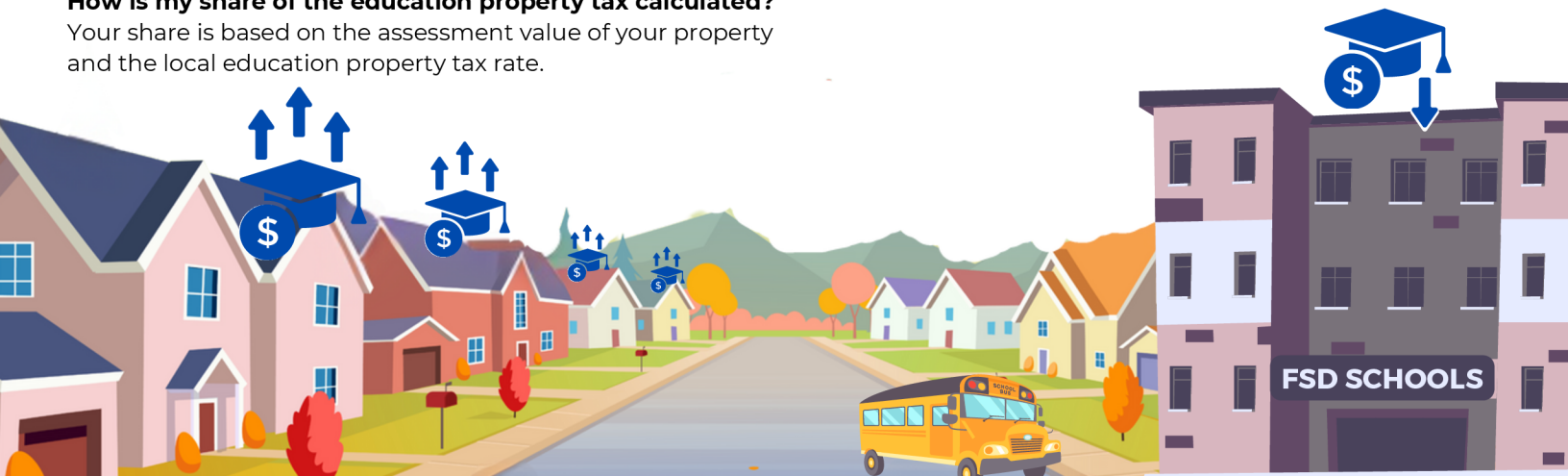
How is my share of the education property tax calculated?

Your share is based on the assessment value of your property and the local education property tax rate.

The EPT collected does not equal the amount received by your school board.

Where does the education property tax go?

The money collected from the education property tax goes to fund Albertans' priorities in education. The education property tax is pooled into the general fund and then distributed among Alberta's public and separate school boards on an equal per-student basis.



MEET THE TEAMS THAT SUPPORT THE DIVISION



FINANCE SERVICES

Expertise to support the division and schools:

- Accounts payable & receivable
- Donation & Grant management
- Budgeting and fund allocation
- Fee collection management



EMPLOYEE SERVICES

Expertise to support candidates, employees, and schools:

- Payroll & Benefits
- Labour Relations
- Recruitment & Retention
- Dispatching Casual Workers
- Employee Recognition
- Psychological Health & Safety in the Workplace



TECHNOLOGY SERVICES

Expertise to support employees, parents, and students:

- Over 10,000 devices
- Internet, Intranet, and Phone Services
- Device Security & Safety
- Software Training & Troubleshooting
- Device Repairs & Deployment
- System efficiency through technology advances



FACILITY SERVICES & RISK MANAGEMENT

Expertise to ensure the safe operations of the division and schools:

- Skilled and journeyman labour for building and grounds repairs and maintenance
- Project Management & Capital Planning
- Risk Management & Safety Training



LEARNING SERVICES

Expertise to support the division, schools, and students:

- Innovation & Design
- Numeracy & Literacy
- Indigenous Learning & Equity
- Teaching, Learning & Leading
- Continuous Improvement
- Support & Well-Being



TRANSPORTATION SERVICES

Expertise to support the division and schools:

- 72 Routes, 92 Buses, 83 Drivers
- Coordination of routes, field trips, and emergent service
- Driver Recruitment & Training
- Oversee vehicle maintenance



COMMUNICATIONS & COMMUNITY ENGAGEMENT

Expertise to support the division, parents, employees, and schools:

- Social Media & Website Management
- Celebrating our Learning Community
- Program & School Promotion
- Connection & Informing Stakeholders

WHO DO THEY SUPPORT?



= 100
 Staff
 Students
 Parents & Guardians

= 1 School

HOW CAN YOU SUPPORT FOOTHILLS SCHOOL DIVISION?

Raise your voice and have a say

Funding for education has been greatly impacted by external pressures including inflation and increase in scope of services in schools. Advocacy is your opportunity to influence change for our division and for school boards across Alberta.



Learn More: bit.ly/FSDAdvocacy

Learn More: [Ideas that Make Cents](#)

YOUR TRUSTEES

- WARD 1 - Jack Molyneux
- WARD 2 - John Evans
- WARD 3 - Theresa Letendre, Chair
- WARD 4 - Lisa Penzo, Vice Chair
- WARD 4 - Sharon Nichols
- WARD 5 - Phil Irwin

YOUR EXECUTIVE TEAM

- Superintendent of Schools - Chris Fuzessy
- Assistant Superintendent, Corporate Services - Drew Chipman
- Assistant Superintendent, Learning Services - Caroline Roberts
- Assistant Superintendent, Employee Services - Allen Davidson